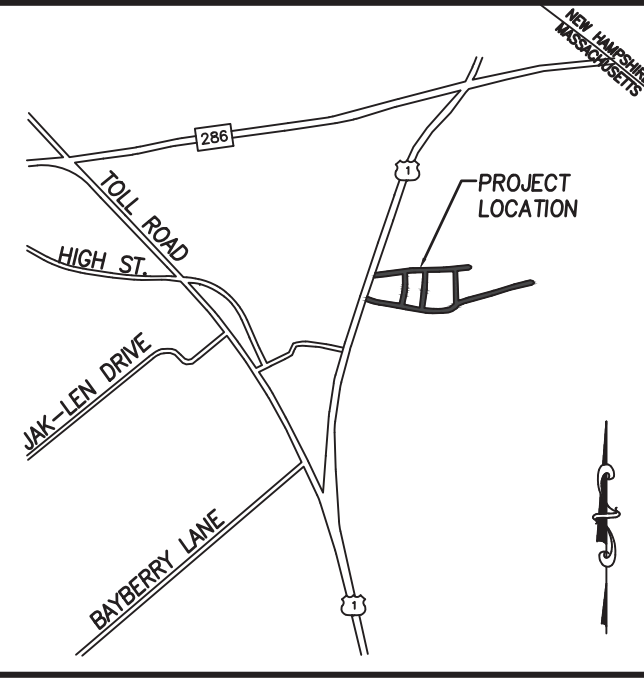


PROPOSED SEWER & TRAILER PAD IMPROVEMENTS FOR HERITAGE PARK IN SALISBURY, MA MAY 2024



LOCUS MAP
N.T.S.

PROJECT LOCATION

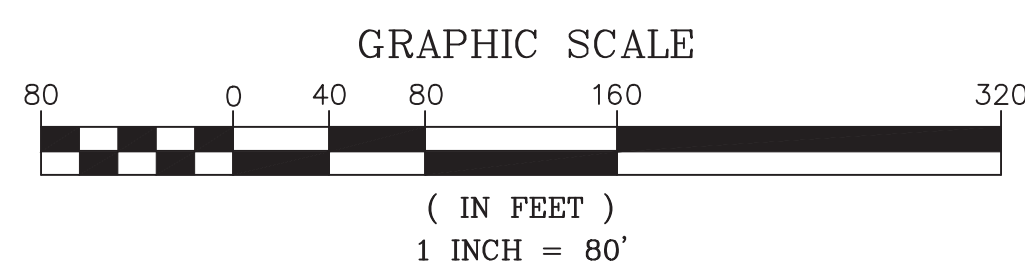
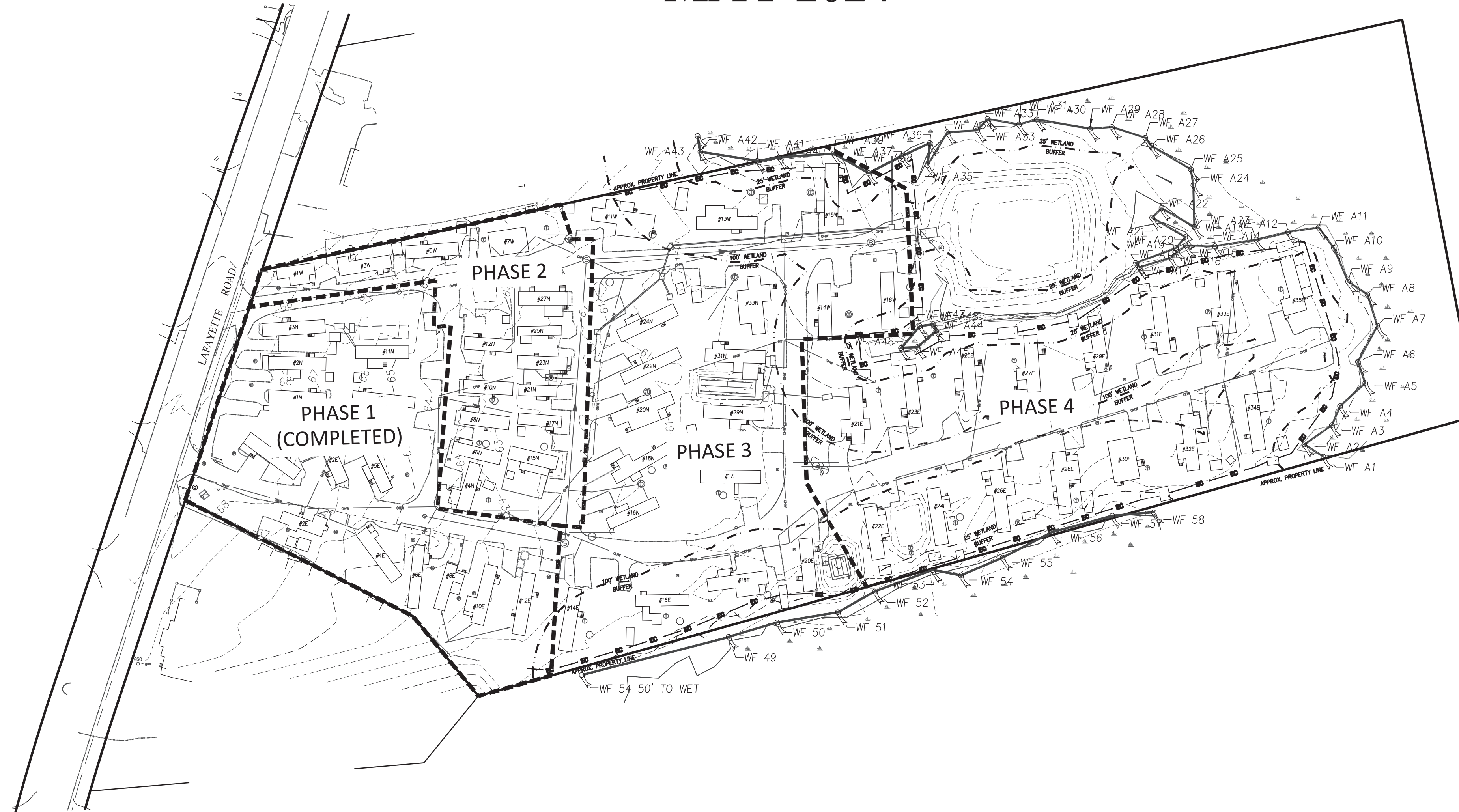
HERITAGE PARK — SALISBURY
194 LAFAYETTE ROAD
MAP 23, LOT 42

OWNER OF RECORD

HERITAGE PARK HOMEOWNERS
COOPERATIVE HOUSING CORP.
194 LAFAYETTE ROAD
SALISBURY, MA 019502
C/O GREAT NORTH PROPERTY
MANAGEMENT
194 LAFAYETTE ROAD
SALISBURY, MA 019502

PLAN INDEX

SHEET NO.	TITLE
1	COVER SHEET
2	GENERAL NOTES
3	SITE PLAN
4	CONSTRUCTION DETAILS 1 OF 2
5	CONSTRUCTION DETAILS 2 OF 2



PREPARED FOR
HERITAGE PARK HOMEOWNERS COOPERATIVE HOUSING CORP.
194 LAFAYETTE ROAD
SALISBURY, MA 01952

NO.	DATE	DESCRIPTION	BY

MEI MILLENNIUM ENGINEERING, INC.
ENGINEERING AND LAND SURVEYING
62 ELM ST. SALISBURY, MA 01952 (978) 463-8980
13 HAMPTON RD. EXETER, NH 03833 (603) 778-0528

SCALE: 1"=80'	DES. BY: B.E.M.	PROJECT: M213951
DATE: MAY 1, 2024	CHKD. BY: J.T.M.	

NOTICE OF INTENT PLAN
IN
SALISBURY, MA.
SHOWING
PROPOSED SEWER & TRAILER PAD IMPROVEMENTS
AT
HERITAGE PARK

COVER SHEET
SHEET: 1 OF 5

GENERAL NOTES

- THE CONTRACTOR SHALL CALL DIGSAFE AT 1-800-344-7233 AT LEAST 72 HOURS, SATURDAYS, SUNDAYS, AND HOLIDAYS EXCLUDED, PRIOR TO EXCAVATING AT ANY LOCATION. A COPY OF THE DIGSAFE PROJECT REFERENCE NUMBER(S) SHALL BE GIVEN TO THE OWNER PRIOR TO EXCAVATION.
- LOCATION OF ALL UTILITIES AND SUBSURFACE STRUCTURES ARE FROM SURVEY AND RECORDS OF THE OWNED OR PRIVATE UTILITY COMPANIES AND ARE CONSIDERED APPROXIMATE BOTH AS TO THE SIZE AND LOCATION, AND ARE INDICATED ON THESE DRAWINGS TO GIVE BIDDERS A GENERAL IDEA OF THE EXISTING CONDITIONS TO BE INVESTIGATED. IT IS UNDERSTOOD AND AGREED THAT EACH BIDDER WILL NOT RELY ON THESE DRAWINGS FOR SUCH INFORMATION, BUT THAT EACH BIDDER SHALL MAKE EXAMINATIONS IN THE FIELD AND BY AVAILABLE RECORDS, UTILITY CORPORATIONS AND INDIVIDUALS AS TO THE LOCATION OF ALL SUBSURFACE STRUCTURES.
- ALL ELEVATIONS BASED ON N.G.V. DATUM OF 1929. SURVEY PERFORMED BY MILLENNIUM ENGINEERING, INC., IN OCTOBER 2014 AND MARCH 2024.
- PEDESTRIAN AND VEHICLE ACCESS TO MOBILE HOMES MUST BE MAINTAINED IN A SAFE CONDITION AT ALL TIMES.
- EXISTING PAVEMENTS AND/OR SIDEWALKS SHALL BE SAWCUT WHERE THEY MEET PROPOSED SURFACE TREATMENTS. CUTS SHALL BE SMOOTH AND STRAIGHT. WHERE NEW HOT MIX ASPHALT MEETS EXISTING HOT MIX ASPHALT SURFACES, SAW CUT EDGES ARE TO BE SEALED WITH BITUMEN AND BACKSANDED. PAYMENT FOR SAWCUTS, BITUMEN, BACKSANDING SHALL BE INCIDENTAL TO THE VARIOUS ITEMS INCLUDED IN THIS CONTRACT.
- AREAS OUTSIDE THE LIMITS OF WORK AND/OR EROSION CONTROLS DISTURBED BY THE CONTRACTOR DURING CONSTRUCTION SHALL BE RESTORED TO THEIR ORIGINAL CONDITION AT THE EXPENSE OF THE CONTRACTOR.
- SHEDS, STONEWALLS, FENCES, MAIL BOXES, SIGNS, CURBS, LIGHT POLES, ETC. SHALL BE REMOVED AND REPLACED/RESET AS NECESSARY TO PERFORM THE WORK.
- ALL PAVEMENT DISTURBED BY THE CONTRACTORS OPERATIONS SHALL BE REPLACED AS SHOWN ON PLAN DETAILS.
- CONCRETE THRUST BLOCKS, ANCHOR BLOCKS, OR APPROVED JOINT RESTRAINT METHODS SHALL BE PROVIDED FOR PRESSURE SEWERS WHERE ANY BENDS, TEES, PLUGS, OR WYES ARE INSTALLED.
- THE CONTRACTOR SHALL NOT STORE ANY APPARATUS, MATERIALS, SUPPLIES, OR EQUIPMENT ON DRAINAGE STRUCTURES OR WITHIN 100 FEET OF WETLANDS.
- SEWER TRENCHES MAY BE EXCAVATED WIDER THAN THE LIMIT OF EXCAVATION AND PAYMENT FOR EARTH EXCAVATION ABOVE THE LINE OF NARROW TRENCH LIMIT. ANY SUCH ADDITIONAL EXCAVATION SHALL BE AT THE CONTRACTORS EXPENSE AND SHALL NOT BE MEASURED FOR PAYMENT.
- BELOW THE LINE OF NARROW TRENCH LIMIT THE TRENCH SHOULD NOT BE EXCAVATED BEYOND THE TRENCH WIDTH "W". IF MATERIAL IS LOOSENED OR REMOVED BEYOND THE ABOVE MENTIONED LIMITS, THE CONTRACTOR WILL BE REQUIRED TO PROVIDE CRUSHED STONE FOR THE FULL WIDTH OF THE TRENCH AT NO ADDITIONAL COST TO THE OWNER.
- HOUSE CONNECTION LOCATIONS ARE APPROXIMATE. EXACT LOCATIONS SHALL BE DETERMINED BY THE OWNER'S REPRESENTATIVE IN THE FIELD.

- PROTECTION OF WATER SUPPLIES - WHENEVER A SEWER MUST CROSS UNDER A WATER MAIN, THE SEWER SHALL BE LAID AT SUCH AN ELEVATION THAT THE TOP OF THE SEWER IS AT LEAST 18 INCHES BELOW THE BOTTOM OF THE WATER MAIN. WHEN THE ELEVATION OF THE SEWER CANNOT BE VARIED TO MEET THE ABOVE REQUIREMENT, THE WATER MAIN SHALL BE RELOCATED BY THE CONTRACTOR AS DIRECTED BY THE OWNER'S REPRESENTATIVE TO PROVIDE THIS SEPARATION OR THE CONTRACTOR SHALL CONSTRUCT THE NEW SEWER OF CLASS 150 PRESSURE PIPE FOR A DISTANCE OF 10 FEET ON EACH SIDE OF THE WATER MAIN. ONE FULL LENGTH OF CLASS 150 PRESSURE PIPE SEWER SHOULD BE CENTERED ON THE WATER MAIN AS MUSH AS POSSIBLE. THE SEWER CONSTRUCTED OF THE PRESSURE PIPE MUST BE PRESSURE TESTED TO ASSURE WATER TIGHTNESS.
- ALL STREET EXCAVATIONS SHALL BE COMPLETELY CLOSED AT THE END OF EACH WORKING DAY BY BACKFILLING OR COVERING WITH STEEL PLATES.
- ALL PVC GRAVITY SEWER PIPE SHALL BE CLASS SDR 35, EXCEPT WHERE INDICATED OTHERWISE ON THE DRAWINGS.
- WATER SERVICE SHALL NOT BE INTERRUPTED MORE THAN 4 HOURS WITHOUT PRIOR APPROVAL BY OWNER.
- THE CONTRACTOR SHALL FIELD CHECK ALL DIMENSIONS AND ELEVATIONS BEFORE PROCEEDING WITH NEW WORK. THE CONTRACTOR SHALL EXCAVATE TO VERIFY PERTINENT DRAINAGE INVERTS AND POTENTIAL UTILITY CONFLICTS. ANY DISCREPANCIES SHALL BE REPORTED TO THE TOWN IMMEDIATELY.
- THE CONTRACTOR SHALL COORDINATE AND BE RESPONSIBLE FOR ALL CONSTRUCTION SIGNING, SAFETY SIGNING, BARRIERS AND OTHER TRAFFIC MANAGEMENT DEVICES NECESSARY TO PROVIDE A SMOOTH, SAFE AND PROPER TRANSITION FOR PEDESTRIAN AND VEHICULAR TRAFFIC.
- THE PARK IS TO PURCHASE PORTABLE GENERATORS FOR EMERGENCY OPERATIONS.
- ALL THRUST BLOCKS AT FORCE MAIN BENDS AND TEE'S MUST BE 3000 PSI CONCRETE MINIMUM AND SHALL BE PRECAST AND/OR POURED IN PLACE.

UTILITIES

F & G	FRAME AND GRATE
F & C	FRAME AND COVER
HDPE	REINFORCED CONCRETE PIPE
VC	VITRIFIED CLAY PIPE
PVC	POLYVINYL CHLORIDE PIPE
HDPE	HIGH DENSITY POLYETHYLENE PIPE
CIP	CAST IRON PIPE
DIP	DUCTILE IRON PIPE
CMP	CORRUGATED METAL PIPE
CB	CATCH BASIN
GI	GUTTER INLET
CI	CURB INLET
MH	MANHOLE
HYD	HYDRANT
INV	INVERT ELEVATION
UP	UTILITY POLE

SURVEY

□	C.B.	CONCRETE BOUND
□	S.B.	STONE BOUND
□	D.H.	DRILL HOLE
●	PK	MASONRY NAIL
○	I.P.	IRON PIPE
○	I ROD	IRON ROD
○	FND.	FOUND
○	N/FND.	NOT FOUND
○	○	ASSESSORS MAP AND PARCEL

GENERAL

PROP	PROPOSED
MIN	MINIMUM
MAX	MAXIMUM
RET	RETAIN
REM	REMOVE
REMOD	REMODEL
ABAN	ABANDON
ADJ	ADJUST
EXIST	EXISTING
R & R	REMOVE AND RESET
R & S	REMOVE AND STACK
FND	FOUNDATION
ELEV	ELEVATION
ROW	RIGHT OF WAY
NIC	NOT IN CONTRACT
NTS	NOT TO SCALE
TYP	TYPICAL
APPROX.	APPROXIMATE
CEM.	CEMENT
BIT.	BITUMINOUS
CONC.	CONCRETE
H.M.A.	HOT MIX ASPHALT
SW	SIDEWALK
DR	DRIVEWAY
CW	CROSS WALK
SL	STOP LINE
R	RIM
SYCL	SOLID YELLOW CENTER LINE
SWEL	SINGLE WHITE EDGE LINE
R/L	RADIUS/LENGTH
FT	FLAT TOP

LEGEND

EXISTING	PROPOSED	
□	■ CB	CATCH BASIN (OR GUTTER INLET, OR LEACHING BASIN)
□	■ CB(CI OR GIC)	CATCH BASIN (OR GUTTER INLET) WITH CURB INLET CURB (OR BERM) - TYPE NOTED
—	—	EDGE OF ROAD
---160---	—(162)—	CONTOUR
○	○	SEWER MANHOLE
○	●	DRAINAGE MANHOLE
⊗	⊗	GAS GATE
⊗	⊗	WATER GATE
⊗	⊗	HYDRANT
○ FA	● FA	FIRE ALARM BOX
☆	☆	POST MOUNTED PEDESTRIAN LIGHT
○	○	UTILITY POLE
— D —	— D —	DRAIN PIPE
— S —	— S —	SEWER MAIN
—	— FM —	SEWER FORCE MAIN
—	— UD —	UNDERDRAIN
— W —	— W —	WATER MAIN
—	— E/T —	ELECTRIC/TELEPHONE DUCT
□ MB	■ MB	MAIL BOX
— x — x —	— x — x —	HIGHWAY GUARD (TYPE NOTED)
—	—	FENCE (SIZE AND TYPE NOTED)
—	— P —	EASEMENT LINE
—	—	PROPERTY LINE
—	—	100 FT BUFFER ZONE
+	+	TEST PIT
—	—	SILTATION BARRIER/LIMIT OF WORK
—	—	WETLAND



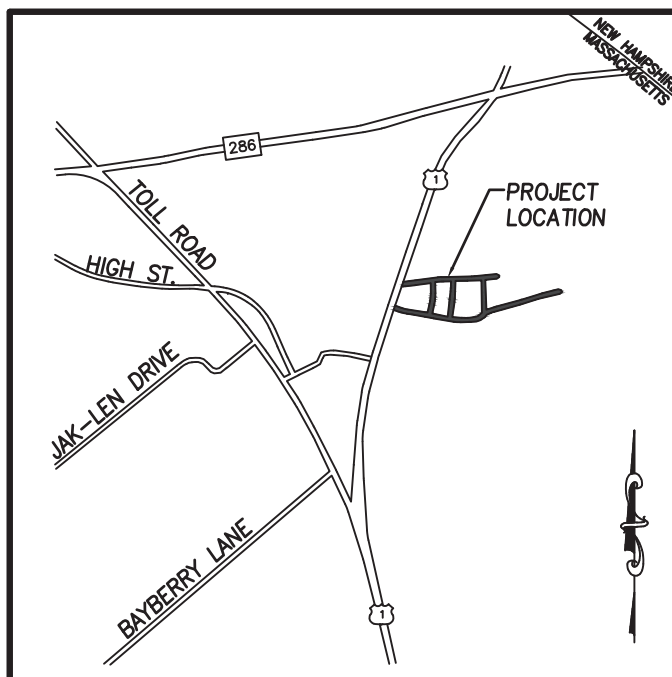
PREPARED FOR			
HERITAGE PARK HOMEOWNERS COOPERATIVE HOUSING CORP.			
194 LAFAYETTE ROAD			
SALISBURY, MA 01952			
NO.	DATE	DESCRIPTION	BY

MILLENNIUM ENGINEERING, INC.
 ENGINEERING AND LAND SURVEYING
 62 ELM ST. SALISBURY, MA 01952 (978) 463-8980
 13 HAMPTON RD. EXETER, NH 03833 (603) 778-0528

SCALE: N/A DESG. BY: B.E.M.
 DATE: MAY 1, 2024 CHKD. BY: J.T.M. PROJECT: M213951

NOTICE OF INTENT PLAN
 IN
SALISBURY, MA.
 SHOWING
PROPOSED SEWER & TRAILER PAD IMPROVEMENTS
 AT
HERITAGE PARK

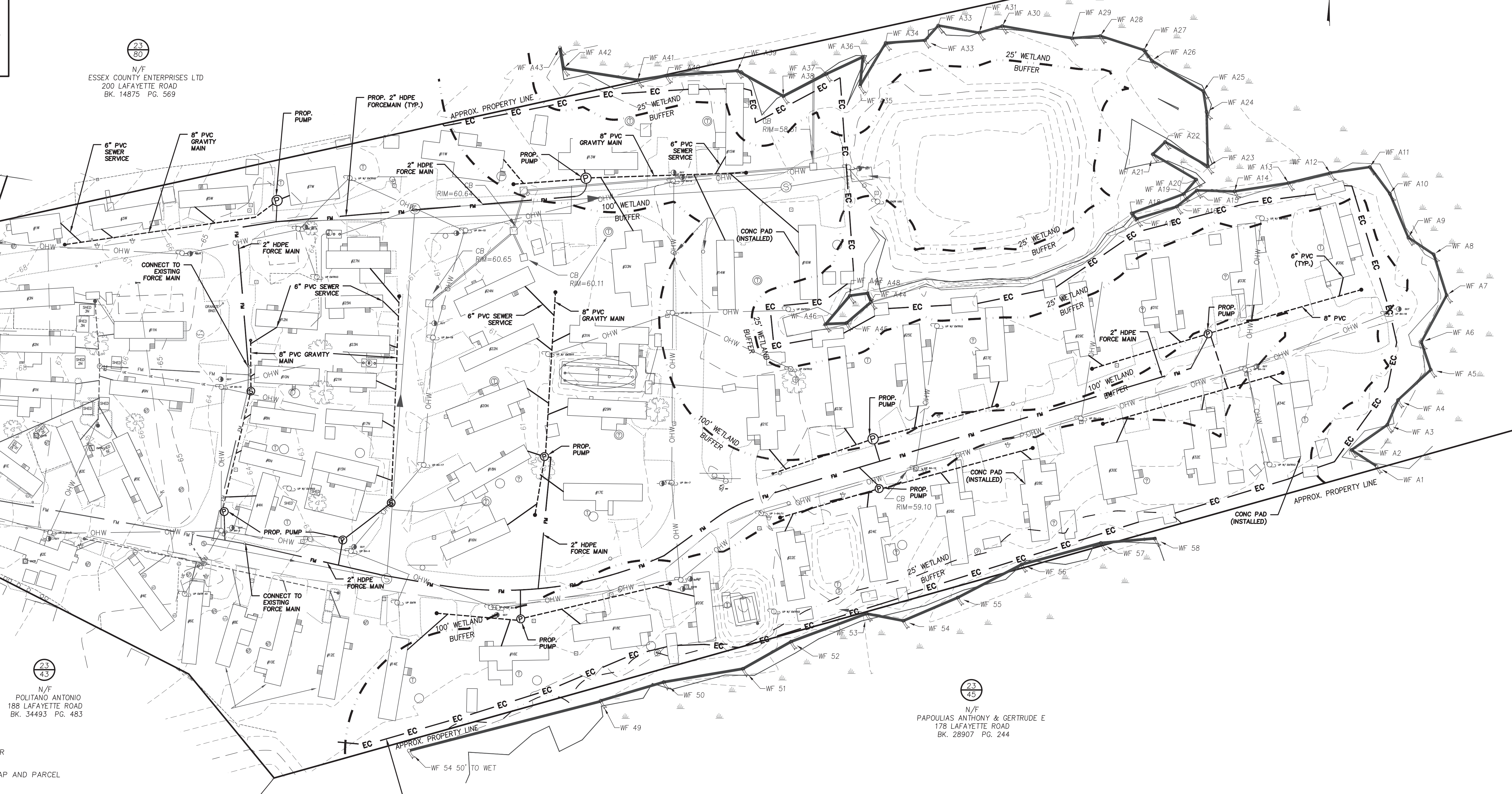
GENERAL NOTES
 SHEET: 2 OF 5



LOCUS MAP
N.T.S.

23
80
N/F
ESSEX COUNTY ENTERPRISES LTD
200 LAFAYETTE ROAD
BK. 14875 PG. 569

23
41
N/F
CONTE WILLIAM A
208 LAFAYETTE ROAD
BK. 11680 PG. 353



23
43
N/F
POLITANO ANTONIO
188 LAFAYETTE ROAD
BK. 34493 PG. 483

23
45
N/F
PAPOULIAS ANTHONY & GERTRUDE E
178 LAFAYETTE ROAD
BK. 28907 PG. 244

LEGEND

- PUMP CHAMBER
- ASSESSORS MAP AND PARCEL
- 2" FORCE MAIN
- 6" PVC SEWER SERVICE (GRAVITY)
- 8" PVC SEWER (GRAVITY)
- EROSION CONTROL
- WETLAND BUFFER 25'
- WETLAND BUFFER 100'
- WETLAND/ WETFLAG LINE

NOTES:

1) LOCATION OF PROPOSED SEWER SERVICE ON THESE PLANS ARE APPROXIMATE ONLY. CONNECTION POINTS AT RESIDENTIAL UNITS SHALL BE DETERMINED IN THE FIELD.



PREPARED FOR
HERITAGE PARK HOMEOWNERS COOPERATIVE HOUSING CORP.
194 LAFAYETTE ROAD
SALISBURY, MA 01952

MEI MILLENNIUM ENGINEERING, INC.
ENGINEERING AND LAND SURVEYING
62 ELM ST. SALISBURY, MA 01952 (978) 463-8980
13 HAMPTON RD. EXETER, NH 03833 (603) 778-0528

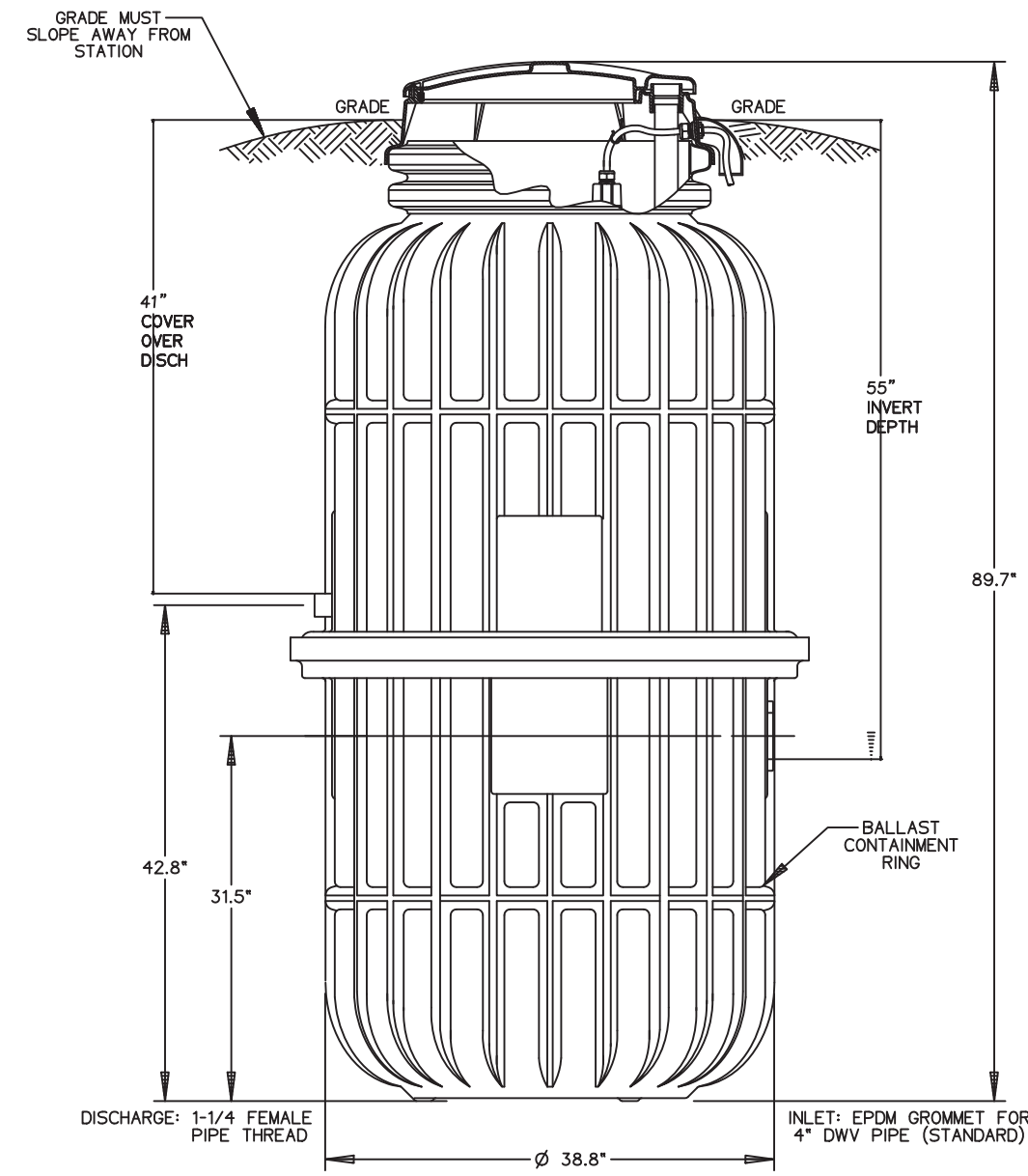
NOTICE OF INTENT PLAN
IN
SALISBURY, MA.
SHOWING
PROPOSED SEWER & TRAILER PAD IMPROVEMENTS
AT
HERITAGE PARK

SITE PLAN
SHEET: 3 OF 5

NO.	DATE	DESCRIPTION	BY

SCALE: 1"=40'
DATE: MAY 1, 2024
DESIGNER: B.E.M.
CHECKER: J.T.M.
PROJECT: M213951

OPTIONS: DH152-93 (HARD WIRED LEVEL CONTROLS)
 DR152-93 (WIRELESS LEVEL CONTROLS)

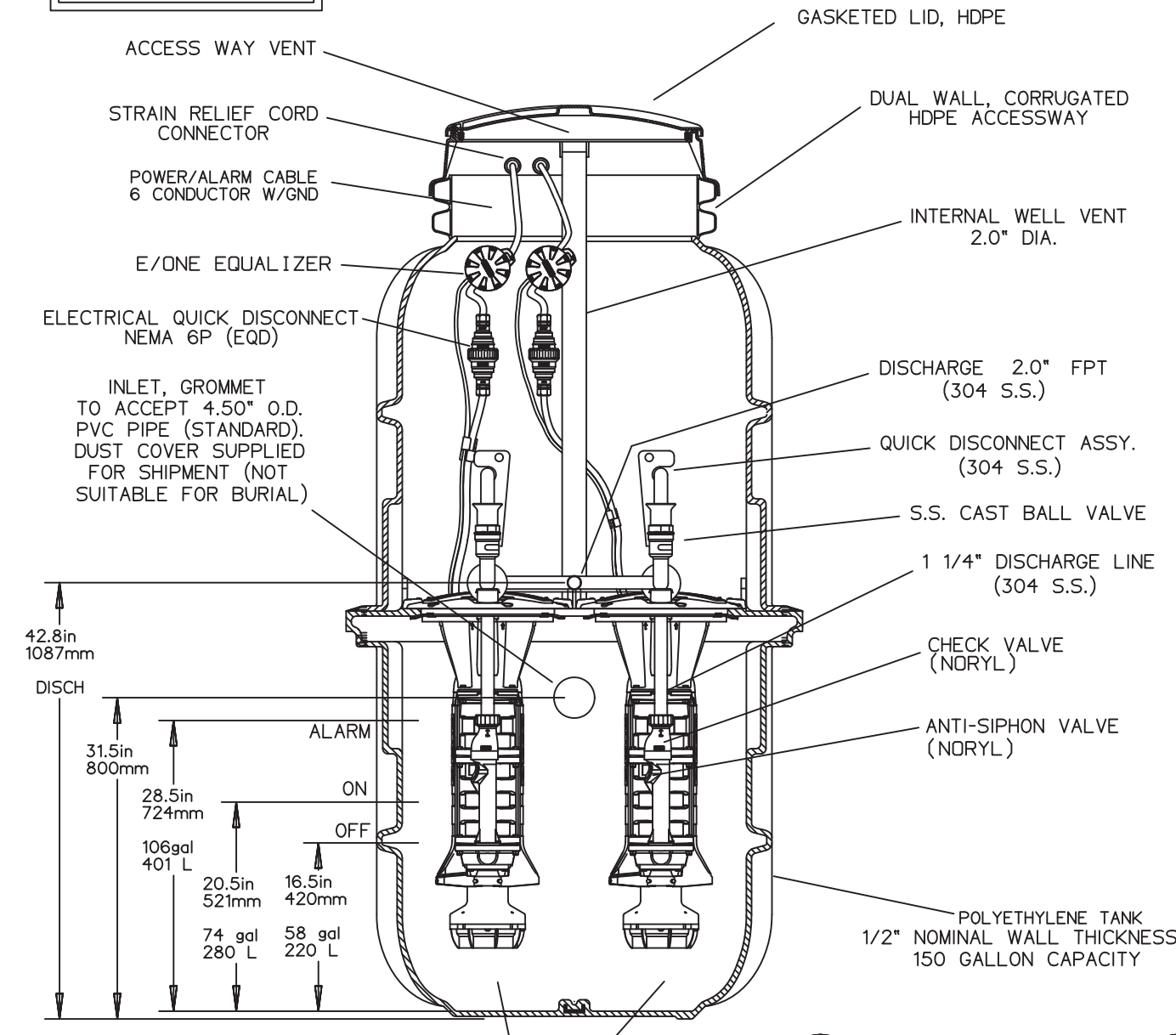


CONCRETE BALLAST MAY BE REQUIRED SEE INSTALLATION INSTRUCTIONS FOR DETAILS

UL	UPC	NSF	SP
AD	CAH	7/13/07	C 1/16
DR BY	CHK'D	DATE	ISSUE SCALE
eone SEWER SYSTEMS			
MODEL DH152-93 / DR152-93			

FIELD JOINT REQUIRED FOR MODELS DH152-129 / DR152-129 & DH152-160 / DR152-160

OPTIONS: DH152 (HARD WIRED LEVEL CONTROLS)
 DR152 (WIRELESS LEVEL CONTROLS)



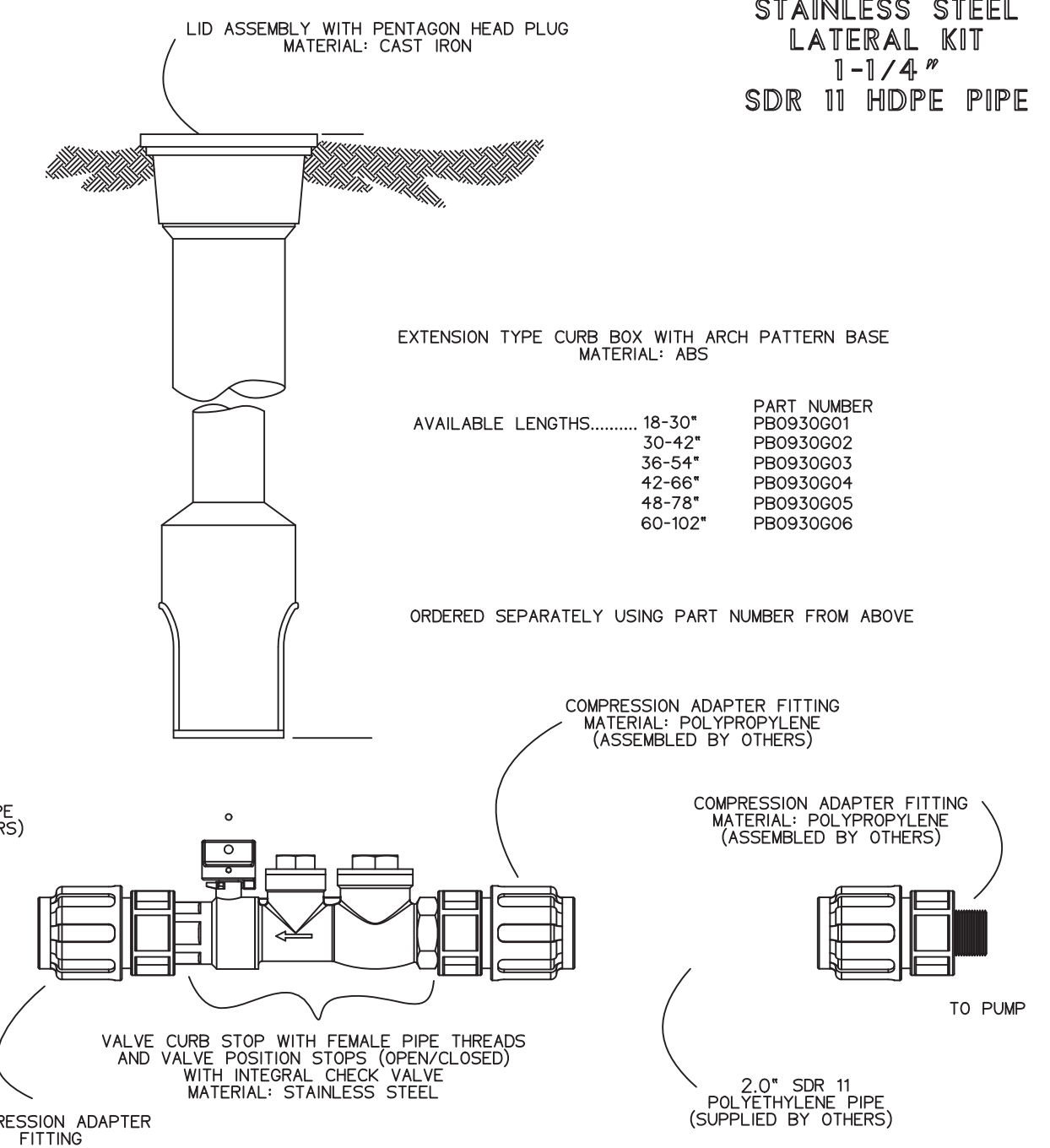
SEMI-POSITIVE DISPLACEMENT TYPE PUMP EACH DIRECTLY DRIVEN BY A 1 HP MOTOR

CONCRETE BALLAST MAY BE REQUIRED SEE INSTALLATION INSTRUCTIONS FOR DETAILS

NOTE: DIMENSIONS ARE FOR REF ONLY

KC	PD	09/30/19	F
DR BY	CHK'D	DATE	ISSUE SCALE
eone SEWER SYSTEMS			
MODEL DH152 / DR152 DETAIL SHEET			
NA0052P02			

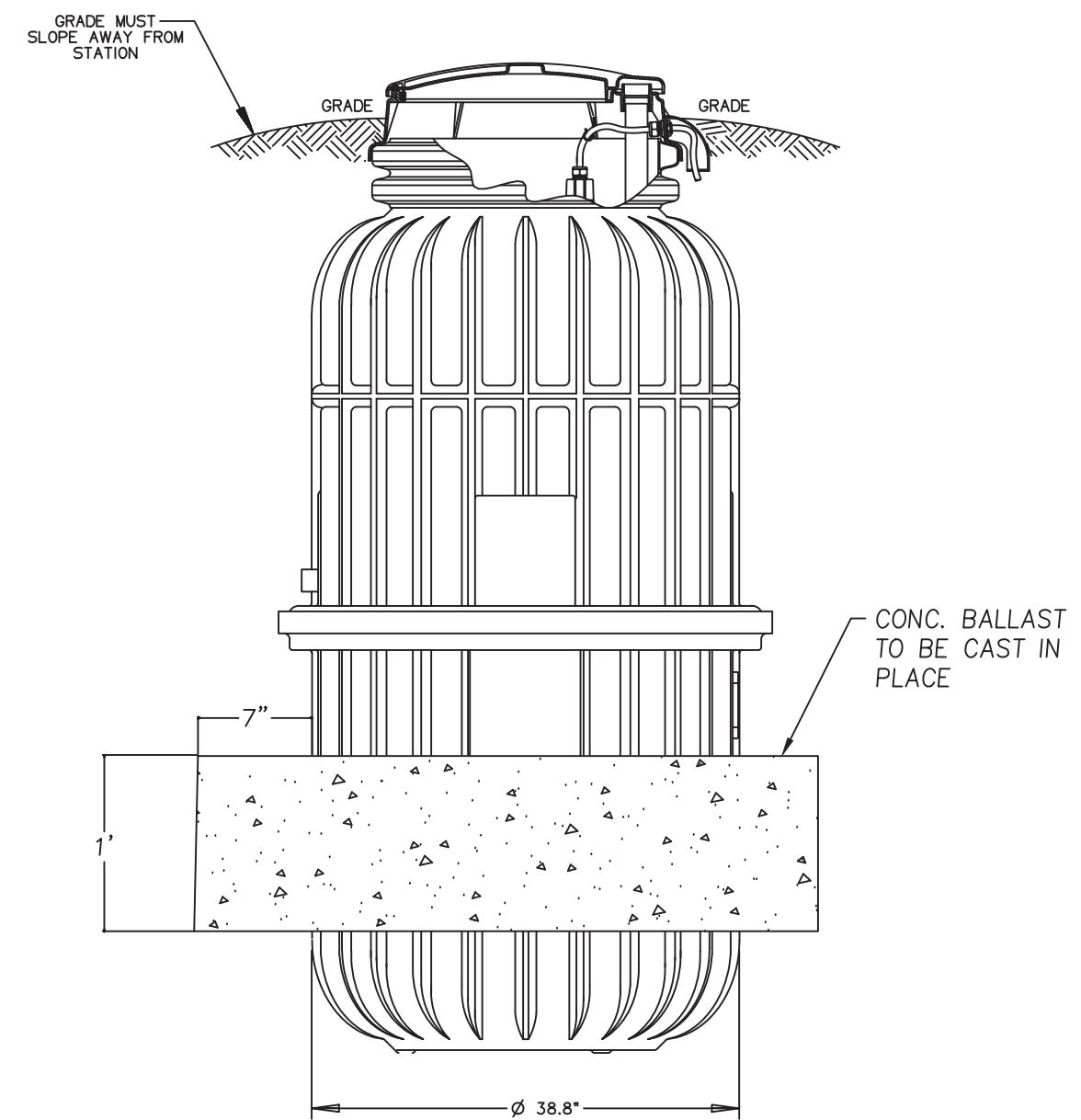
STAINLESS STEEL LATERAL KIT
 1-1/4" SDR 11 HDPE PIPE



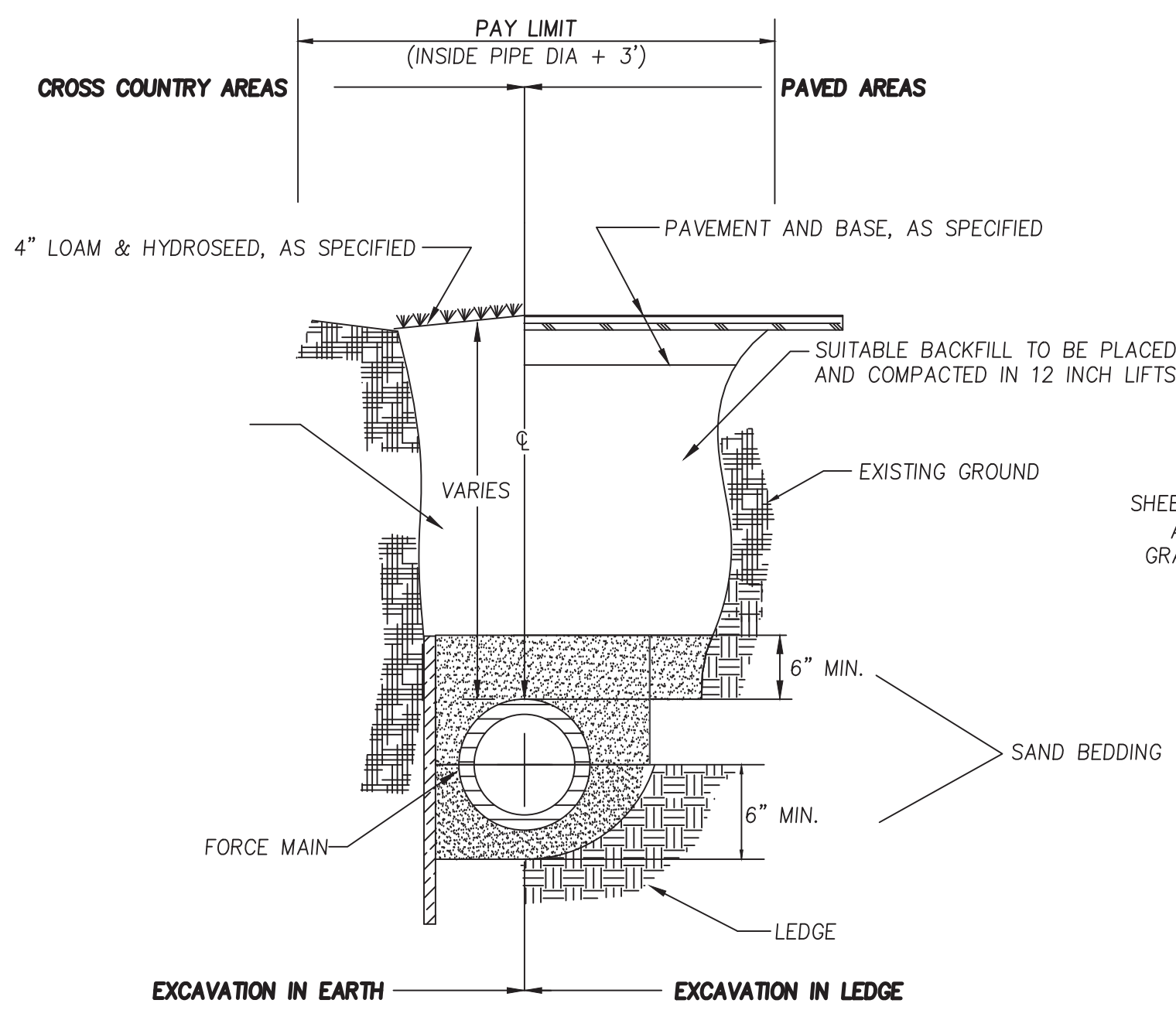
- NOTES:
- SS CURB STOP/CHECK VALVE AND FITTINGS ARE PROVIDED SEPARATELY, TO BE ASSEMBLED BY OTHERS
 - TO ASSEMBLE, APPLY A DOUBLE LAYER OF TEFLON TAPE, AND A LAYER OF PIPE DOPE (SUPPLIED BY OTHERS) TO THE THREADS ON THE PLASTIC FITTINGS AND INSTALL PER THE MANUFACTURER'S INSTRUCTIONS
 - ASSEMBLY IS TO BE PRESSURE TESTED (BY OTHERS)
 - ASSEMBLY IS TO BE USED WITH SDR11 HDPE PIPE
 - TO ORDER SS LATERAL KIT, USE PART NUMBER NC0193G01
 - CURB BOX IS TO BE ORDERED SEPARATELY, SEE ABOVE

KIT PARTS ARE NOT ASSEMBLED

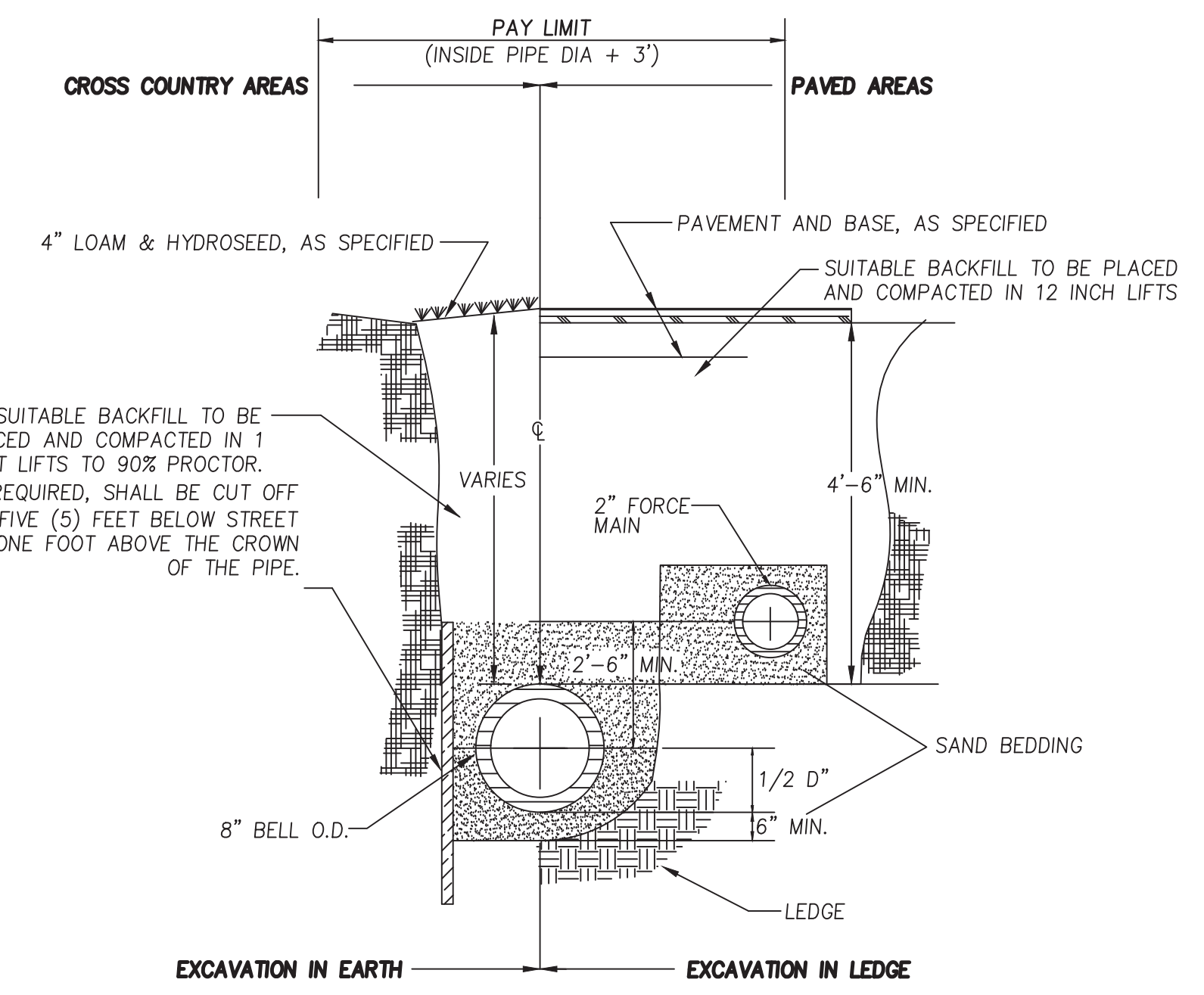
SOS	DN	11/02/11	B	3/16
DR BY	CHK'D	DATE	ISSUE	SCALE
eone				
STAINLESS STEEL LATERAL KIT 1-1/4" SDR 11 HDPE PIPE				
NA0330P02				



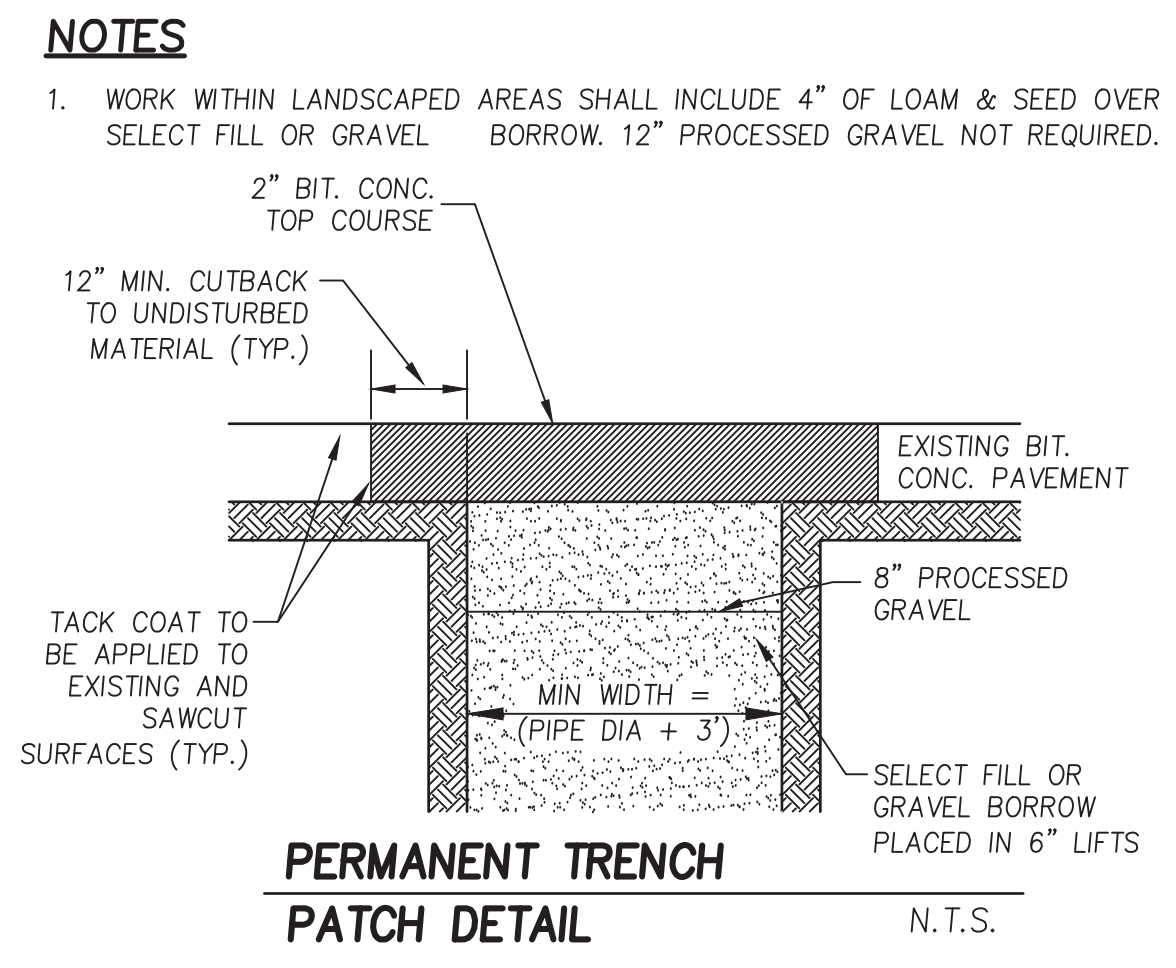
CONCRETE BALLAST
 DETAIL N.T.S.



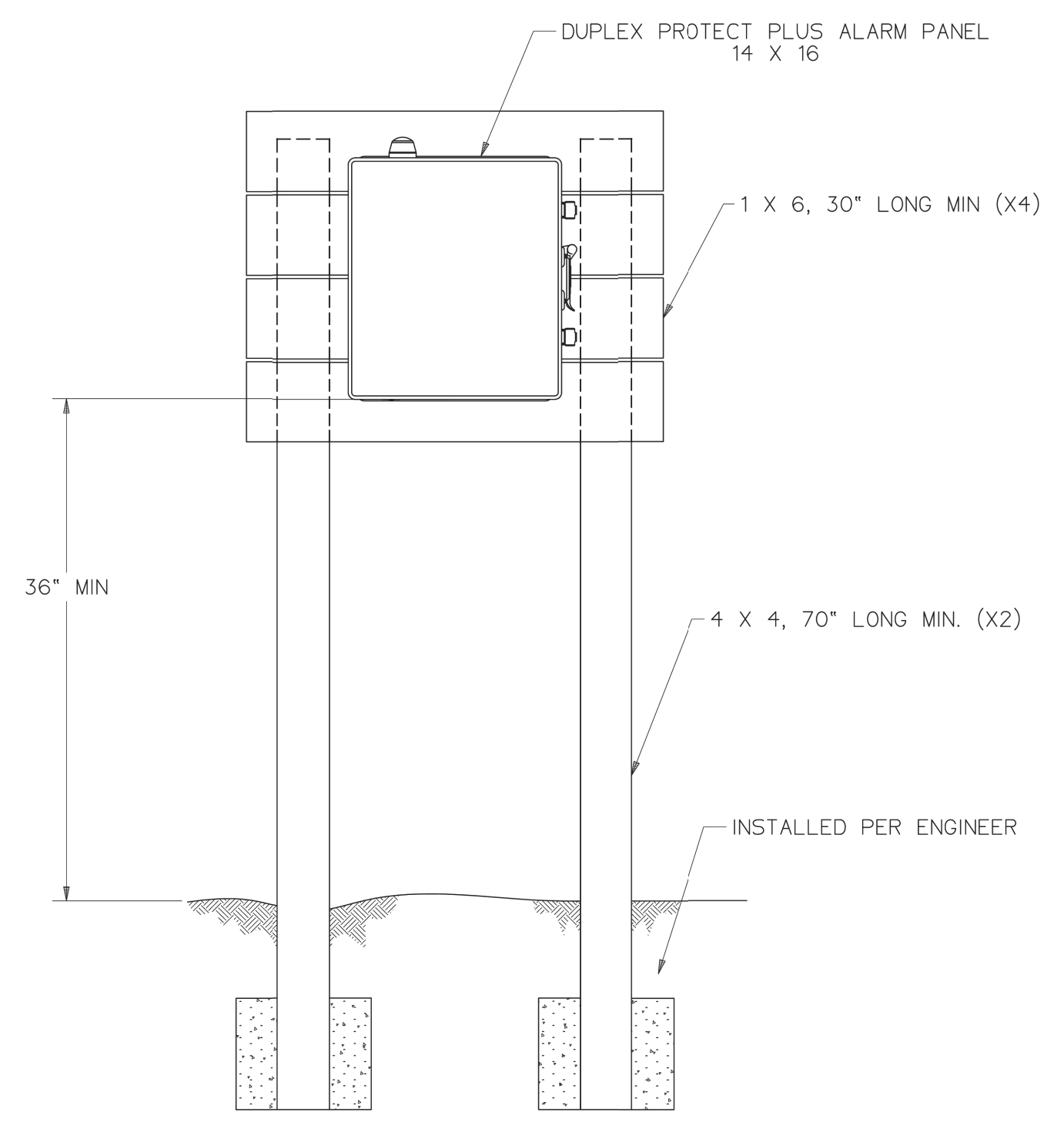
TYPICAL FORCE MAIN TRENCH
 DETAIL N.T.S.



TYPICAL GRAVITY SEWER (& 2" FM) TRENCH
 DETAIL N.T.S.



PERMANENT TRENCH
 PATCH DETAIL N.T.S.



ALARM PANEL
 DETAIL N.T.S.



PREPARED FOR
 HERITAGE PARK HOMEOWNERS COOPERATIVE
 HOUSING CORP.
 194 LAFAYETTE ROAD
 SALISBURY, MA 01952

MEI MILLENNIUM ENGINEERING, INC.
 ENGINEERING AND LAND SURVEYING
 62 ELM ST. SALISBURY, MA 01952 (978) 463-8980
 13 HAMPTON RD. EXETER, NH 03833 (603) 778-0528

NOTICE OF INTENT PLAN
 IN
 SALISBURY, MA.
 SHOWING
 PROPOSED SEWER &
 TRAILER PAD IMPROVEMENTS
 AT
 HERITAGE PARK

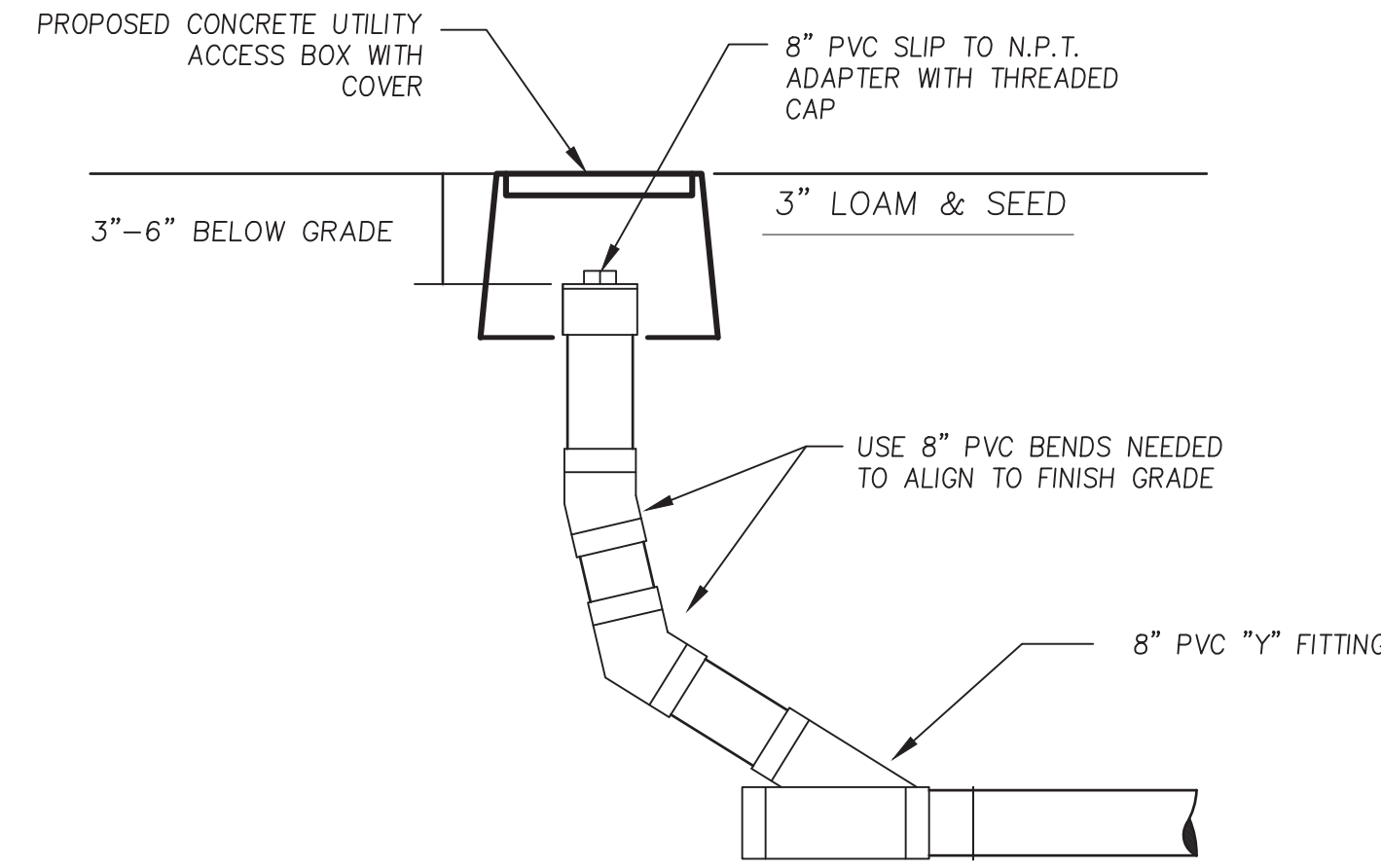
CONSTRUCTION
 DETAILS

SHEET: 4 OF 5

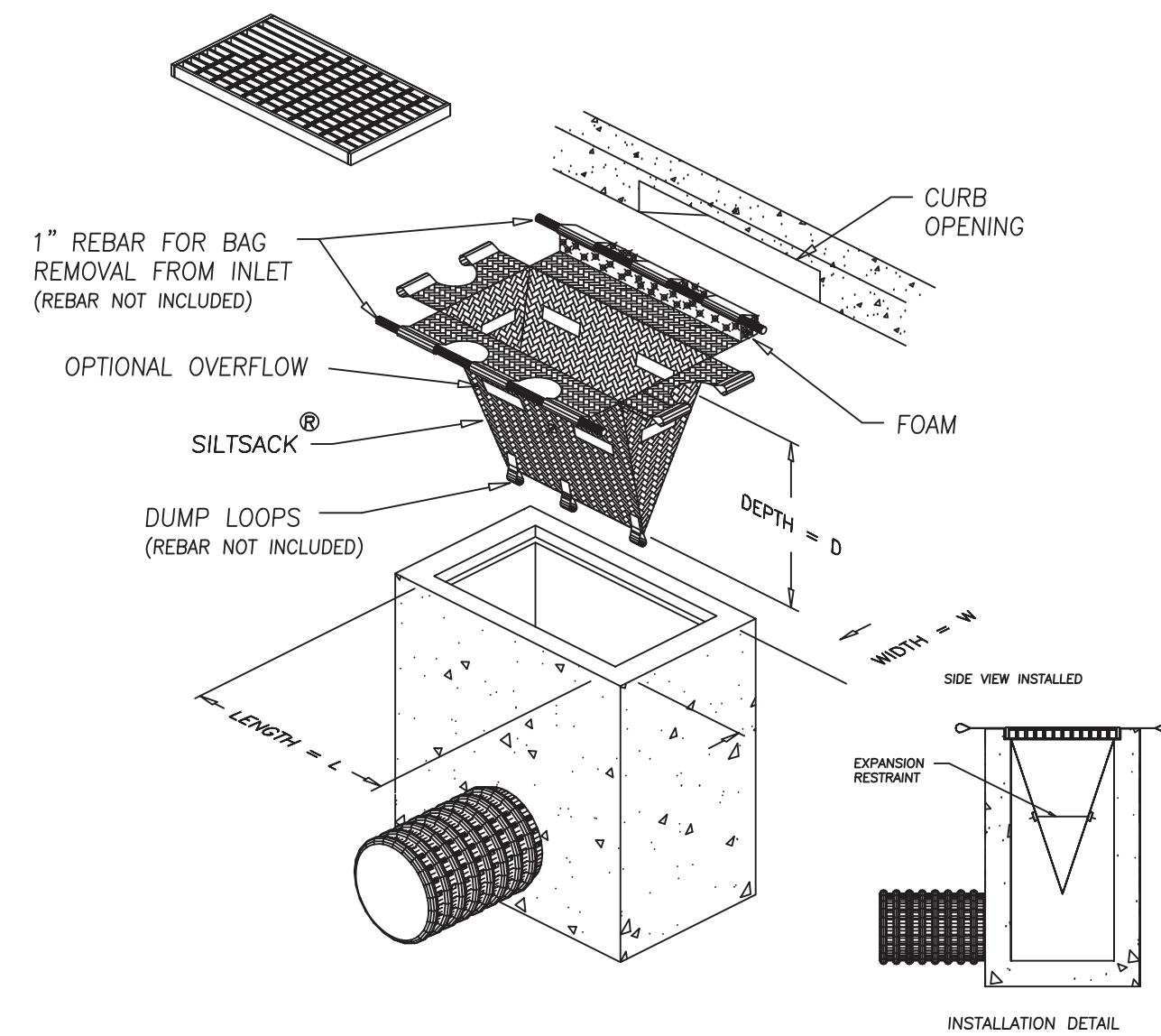
NO.	DATE	DESCRIPTION	BY	SCALE: AS NOTED	DESIG. BY: B.E.M.	PROJECT: M213951
				DATE: MAY 1, 2024	CHKD. BY: J.T.M.	

GENERAL EROSION CONTROL NOTES

1. ALL SILT FENCE SHALL BE INSTALLED BEFORE THE START OF CONSTRUCTION. SILT FENCE SHALL BE REMOVED UPON COMPLETION OF THE PROJECT AND STABILIZATION OF ALL SOIL.
2. ALL FILL SHALL BE FREE OF STUMPS AND LARGE STONES.
3. ANY STANDING BODIES OF WATER CREATED DURING EXCAVATION SHALL BE ELIMINATED.
4. EROSION CONTROL BARRIERS SHALL BE INSPECTED WEEKLY AND AFTER EVERY 0.5" OF RAINFALL AND PROMPTLY REPAIRED OR REPLACED AS NECESSARY.
5. ACCUMULATED SEDIMENT DEPOSITS UPSTREAM OF BARRIERS SHALL BE PROPERLY DISPOSED OF ON A REGULAR BASIS.
6. AREAS OUTSIDE THE LIMITS OF WORK (EROSION CONTROL/SILT FENCE LOCATIONS) DISTURBED BY THE CONTRACTOR DURING CONSTRUCTION SHALL BE RESTORED TO THEIR ORIGINAL CONDITION AT THE EXPENSE OF THE CONTRACTOR.
7. THE CONTRACTOR IS RESPONSIBLE FOR MAINTAINING EROSION AND/OR SEDIMENT CONTROLS DURING CONSTRUCTION. HE/SHE SHALL INSPECT CONTROLS WEEKLY AND AFTER ALL STORM EVENTS. REPAIRS, IF REQUIRED, SHALL BE MADE IMMEDIATELY.
8. TEMPORARY GROUND COVER SHALL BE ESTABLISHED IN AREAS OF CONSTRUCTION WHERE REQUIRED BY THE SALISBURY PLANNING BOARD AND CONSERVATION COMMISSION.
9. ANY DISTURBED AREAS OF THE SITE NOT USED FOR ROADWAY OR UTILITY CONSTRUCTION SHALL BE STABILIZED WITH LOAM AND SEED UNTIL FURTHER DISTURBANCE IS REQUIRED FOR BUILDING CONSTRUCTION.
10. THE CONTRACTOR SHALL IDENTIFY TO THE TOWN HIS/HER TOPSOIL STOCKPILING OPERATIONS AND LOCATIONS.
11. PROVIDE GRAVEL AND WIRE MESH SEDIMENT FILTER AT ALL CATCH BASINS.
12. A MINIMUM OF 4" OF LOAM SHALL BE INSTALLED ON ALL DISTURBED UNPAVED SURFACES.
13. SEED MIX SHALL BE NO LESS THAN 4 LBS./1000 S.F. OF LAND AREA. SEED SHALL CONSIST OF A MAXIMUM OF 10% RYE GRASS AND A MINIMUM OF 90% PERMANENT BLUEGRASS AND/OR FESCUE. LIME SHALL BE APPLIED AT A RATE OF 2 TONS/ACRE.
14. SILT SACKS SHALL BE INSTALLED IN ALL PROPOSED CATCH BASINS AND IN DOWNSTREAM CATCH BASINS IN BEACH ROAD AS SHOWN ON THE EROSION AND SEDIMENTATION CONTROL PLAN.



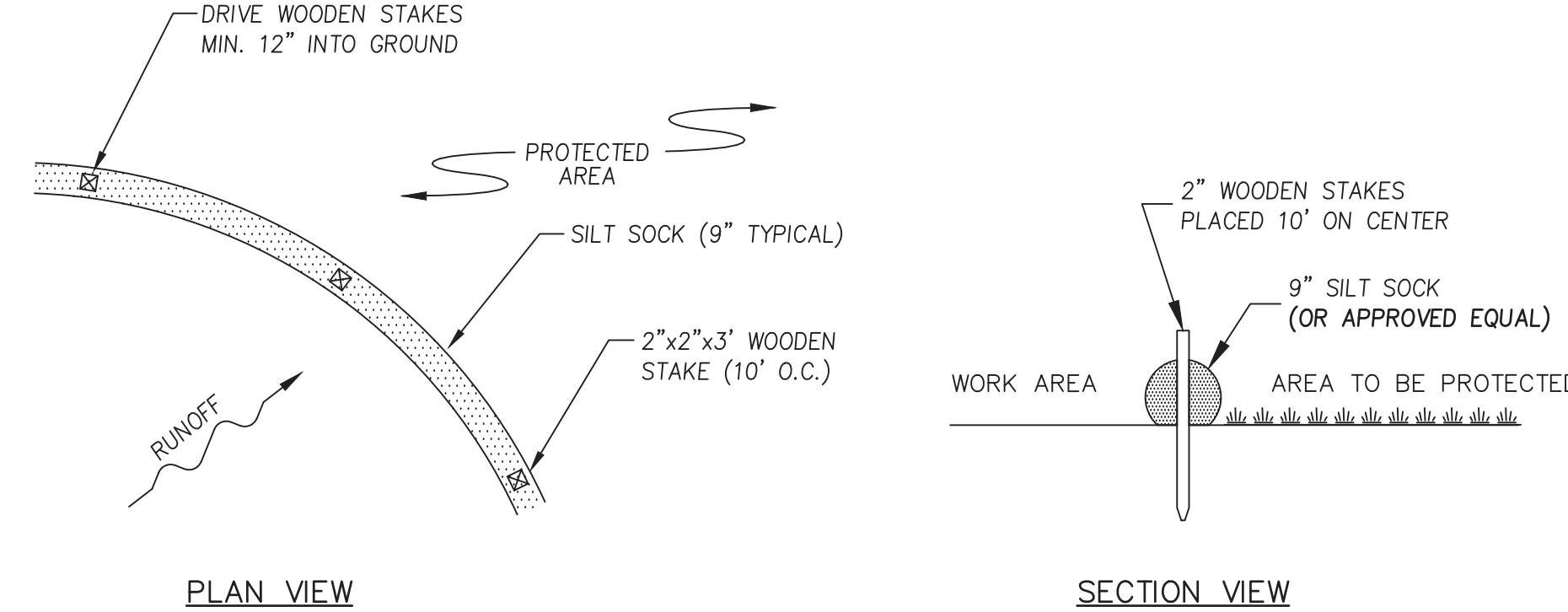
GRAVITY SEWER CLEANOUT DETAIL N.T.S.



NOTES

1. TO INSTALL SILTSACK IN THE CATCH BASIN, REMOVE THE GRATE AND PLACE THE SACK IN THE OPENING. HOLD APPROXIMATELY SIX INCHES OF THE SACK OUTSIDE THE FRAME. THIS IS THE AREA OF THE LIFTING STRAPS. REPLACE THE GRATE TO HOLD THE SACK IN PLACE.
2. WHEN THE RESTRAINT CORD IS NO LONGER VISIBLE, SILTSACK IS FULL AND SHOULD BE EMPTIED.
3. TO REMOVE SILTSACK, TAKE TWO PIECES OF 1" DIAMETER REBAR AND PLACE THROUGH THE LIFTING LOOPS ON EACH SIDE OF THE SACK TO FACILITATE THE LIFTING OF SILTSACK.
4. TO EMPTY SILTSACK, PLACE UNIT WHERE THE CONTENTS WILL BE COLLECTED. PLACE THE REBAR THROUGH THE LIFT STRAPS (CONNECTED TO THE BOTTOM OF THE SACK) AND LIFT. THIS WILL LIFT SILTSACK FROM THE BOTTOM AND EMPTY THE CONTENTS. CLEAN OUT AND RINSE. RETURN SILTSACK TO ITS ORIGINAL SHAPE AND PLACE BACK IN THE BASIN.
5. SILTSACK IS REUSABLE. ONCE THE CONSTRUCTION CYCLE IS COMPLETE, REMOVE SILTSACK FROM THE BASIN AND CLEAN. SILTSACK SHOULD BE STORED OUT OF SUNLIGHT UNTIL NEXT USE.

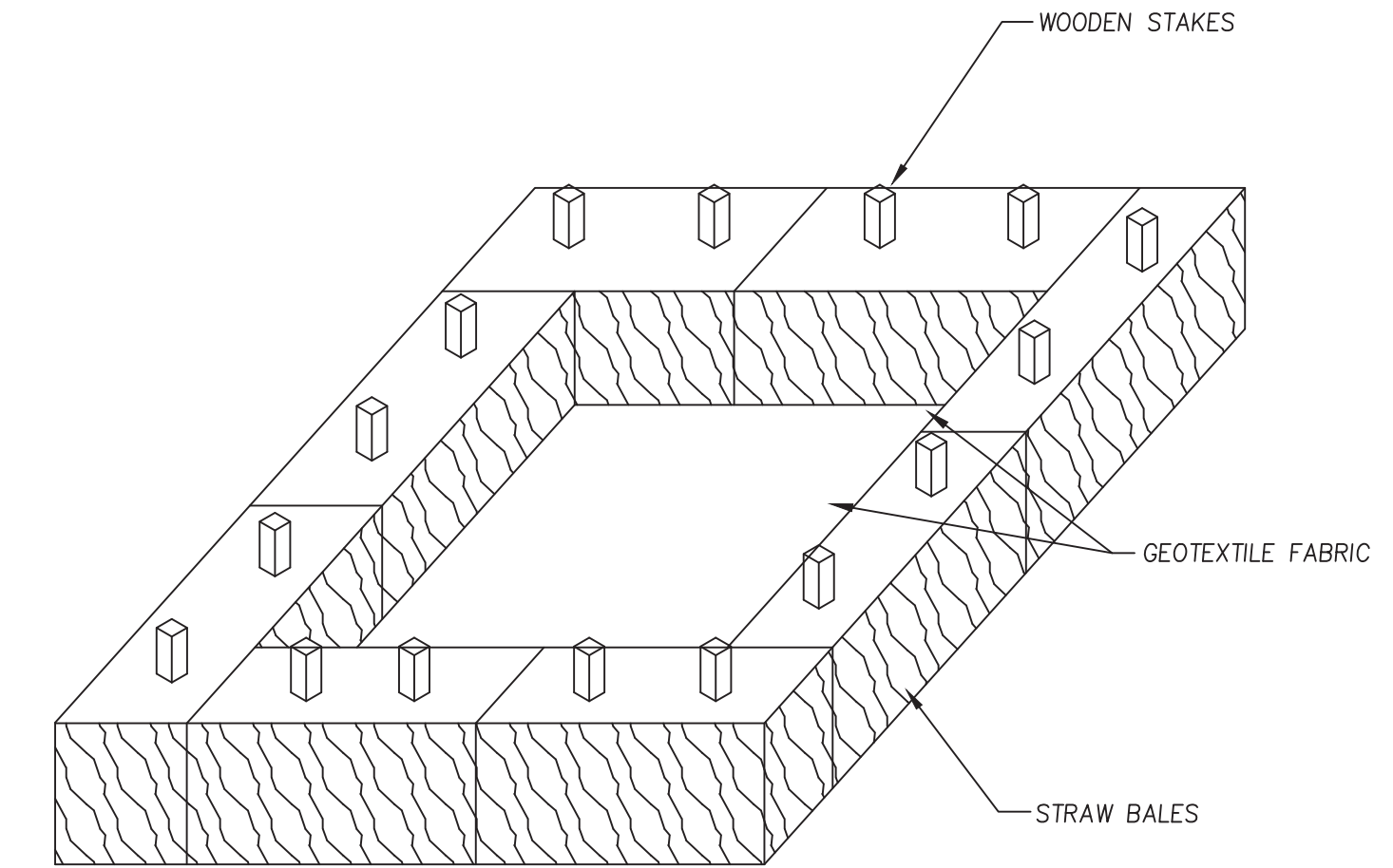
SILT SACK DETAIL N.T.S.



NOTES

1. ALL MATERIAL SHALL MEET SPECIFICATIONS BY FILTREXX OR APPROVED EQUAL.
2. SILT SOCK SHALL BE INSPECTED WITHIN 24 HOURS AFTER EACH RAINFALL AND AT LEAST DAILY DURING PROLONGED RAINFALL. ANY REPAIRS THAT ARE REQUIRED SHALL BE MADE IMMEDIATELY.
3. THE CONTRACTOR SHALL REMOVE SEDIMENT AT THE BASE OF THE UPSLOPE SIDE OF THE SILT SOCK WHEN ACCUMULATION HAS REACHED 1/2 OF THE EFFECTIVE HEIGHT OF THE SILT SOCK.
4. SILT SOCK SHALL BE MAINTAINED UNTIL DISTURBED AREA ABOVE THE DEVICE HAS BEEN PERMANENTLY STABILIZED AND CONSTRUCTION ACTIVITY HAS BEEN COMPLETED.
5. SEDIMENT DEPOSITS THAT ARE REMOVED OR LEFT IN PLACE AFTER THE SOCK HAS BEEN REMOVED SHALL BE GRADED TO CONFORM WITH THE EXISTING TOPOGRAPHY AND VEGETATED.

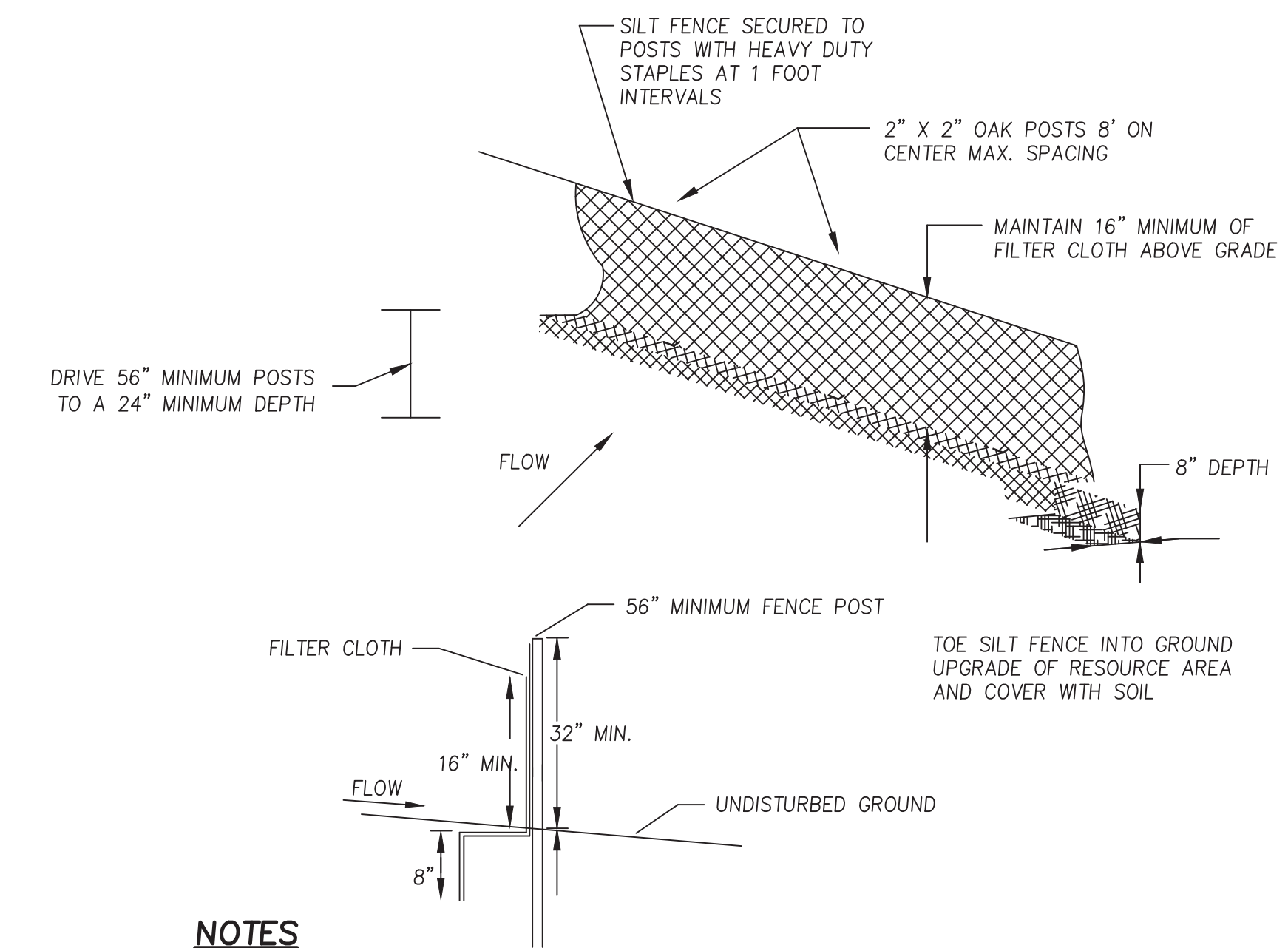
SILT SOCK INSTALLATION DETAIL N.T.S.



NOTES

1. GEOTEXTILE FABRIC SHALL LINE THE DEWATERING BASIN AND BE STAKED INTO THE HAYBALES.
2. DURING THE ACTIVE DEWATERING PROCESS, THE STRUCTURE SHALL BE INSPECTED FREQUENTLY (E.G. ONCE PER HOUR).
3. SEDIMENT BUILDUP SHOULD BE REMOVED PERIODICALLY TO ENSURE THAT THE STRUCTURE'S ABILITY TO EFFECTIVELY FILTER SEDIMENT IS MAINTAINED.
4. ALL DEWATERING ACTIVITIES SHALL OCCUR OUTSIDE THE 100-FOOT WETLAND BUFFER ZONE.
5. THIS IS A TYPICAL DETAIL FOR TREATMENT OF GROUNDWATER REMOVED FROM EXCAVATIONS. THE CONTRACTOR SHALL USE THIS DETAIL OR OTHER APPROVED MEANS TO REMOVE SEDIMENT DURING DEWATERING ACTIVITIES.

TYPICAL DEWATERING DETAIL N.T.S.



NOTES

1. POSTS SHALL BE DOUBLED AND COUPLED AT FILTER CLOTH SEAMS.
2. FILTER CLOTH TO BE FASTENED SECURELY TO SUPPORT NETTING WITH TIES SPACED EVERY 24" AT TOP, MID SECTION, AND BOTTOM.
3. WHEN TWO SECTIONS OF FILTER CLOTH ADJOIN EACH OTHER, THEY SHALL BE OVERLAPPED BY 6 INCHES, FOLDED AND STAPLED.
4. MAINTENANCE SHALL BE PERFORMED AS NEEDED AND MATERIAL REMOVED WHEN "BULGES" DEVELOP IN THE SILT FENCE.

SILT FENCE (AS REQUIRED) INSTALLATION N.T.S.



PREPARED FOR
HERITAGE PARK HOMEOWNERS COOPERATIVE HOUSING CORP.
194 LAFAYETTE ROAD
SALISBURY, MA 01952

MILLENNIUM ENGINEERING, INC.
ENGINEERING AND LAND SURVEYING
62 ELM ST. SALISBURY, MA 01952 (978) 463-8980
13 HAMPTON RD. EXETER, NH 03833 (603) 778-0528

NOTICE OF INTENT PLAN
IN
SALISBURY, MA.
SHOWING
PROPOSED SEWER & TRAILER PAD IMPROVEMENTS
AT
HERITAGE PARK

CONSTRUCTION DETAILS

SHEET: 5 OF 5

NO.	DATE	DESCRIPTION	BY	SCALE: AS NOTED	DESIGN: BY: B.E.M.	PROJECT: M213951
				DATE: MAY 1, 2024	CHKD. BY: T.J.M.	