



Salisbury - Reconstruction and Related Work on Route 1A (North End Boulevard)

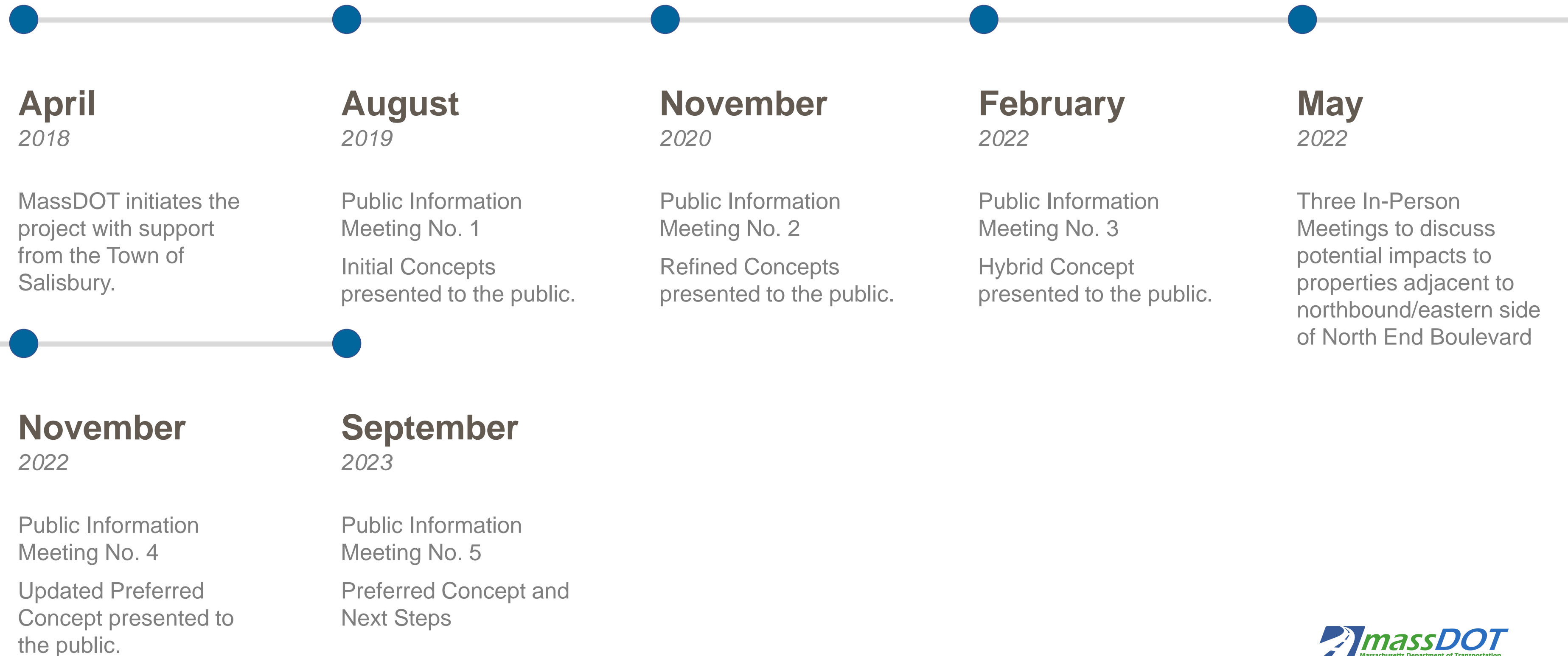
*Public Information Meeting
No. 5*

Public Meeting | Wednesday September 27, 2023 | 7:00 pm

Project File No.: 607710



How did we get here?

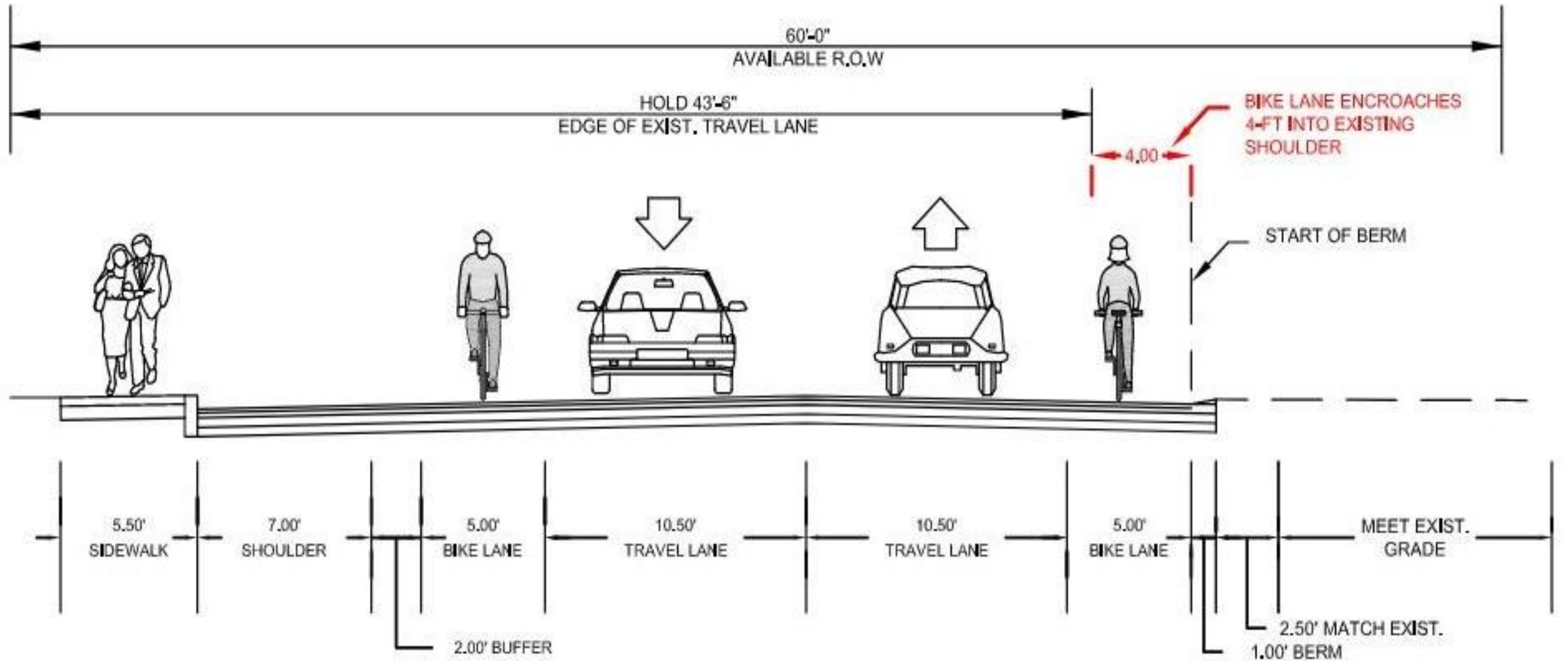


North End Boulevard (Route 1A) Reconstruction

- Improve Overall Roadway Safety
- Improve Pavement Surface Condition
- Improve Pedestrian Accommodations and Provide Safer Crossings to Beach Access
- Provide Dedicated Bicyclist Accommodations
- Improve the Control of Stormwater Runoff and increase capacity of the Drainage Systems



Concept A – Bike Lanes

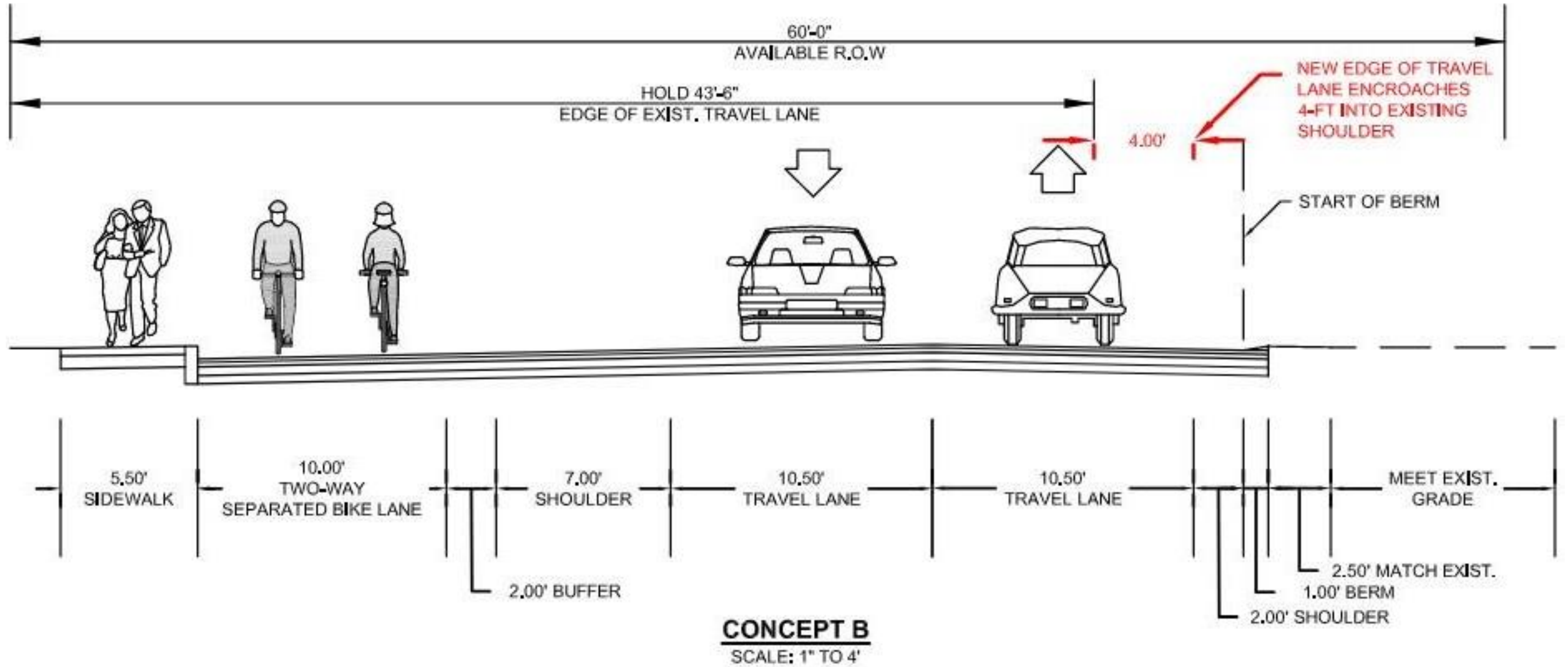


CONCEPT A
SCALE: 1" TO 10'

Concept A – Bike Lanes



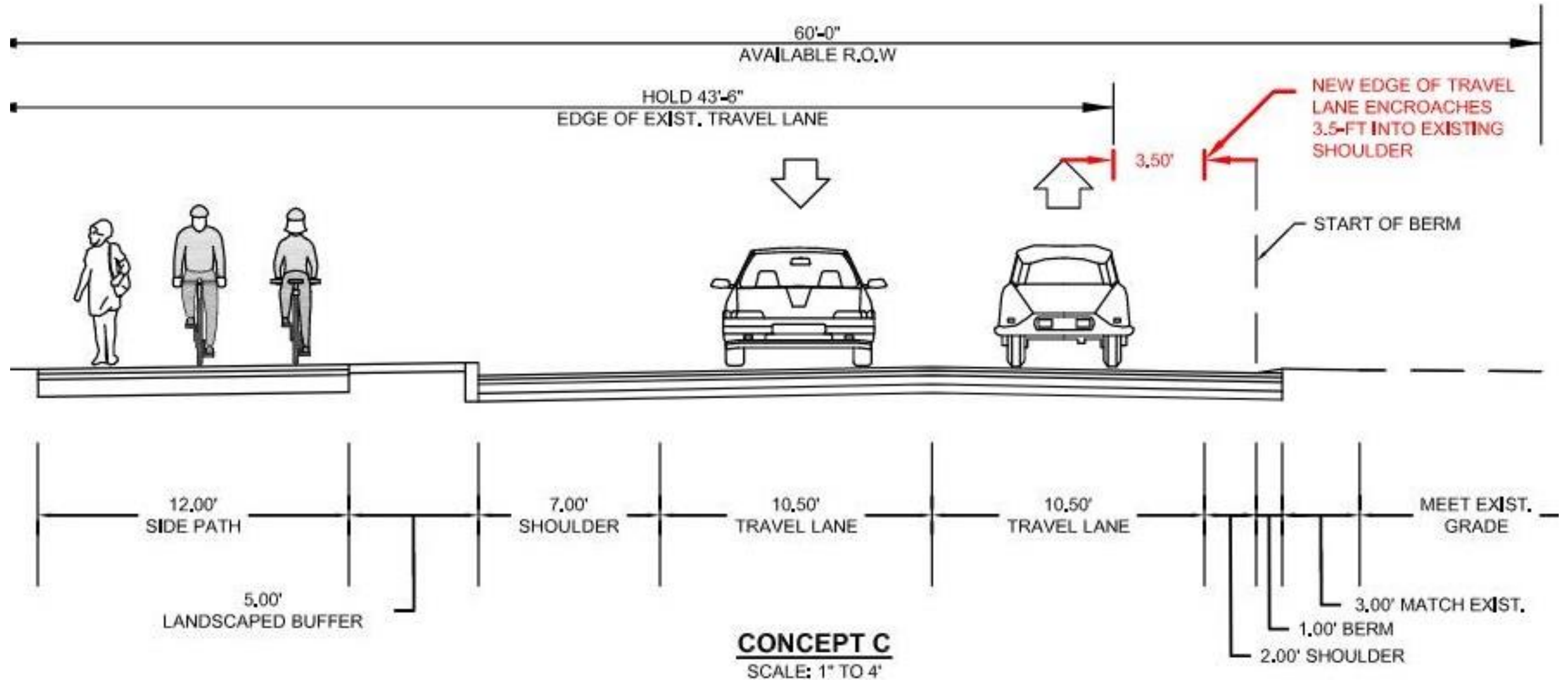
Concept B – Two-Way Separated Bike Lanes



Concept B – Two-Way Separated Bike Lanes



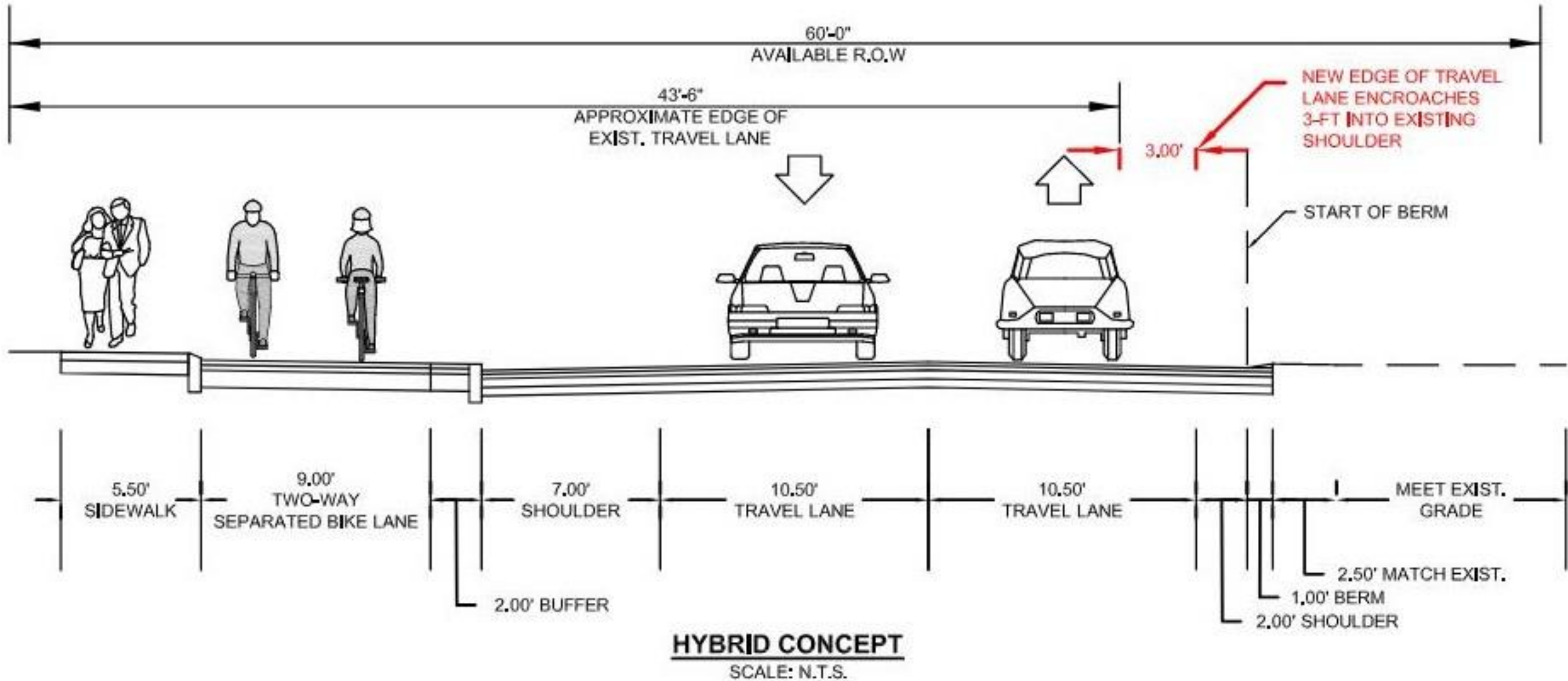
Concept C – Shared Use Path



Concept C – Shared Use Path



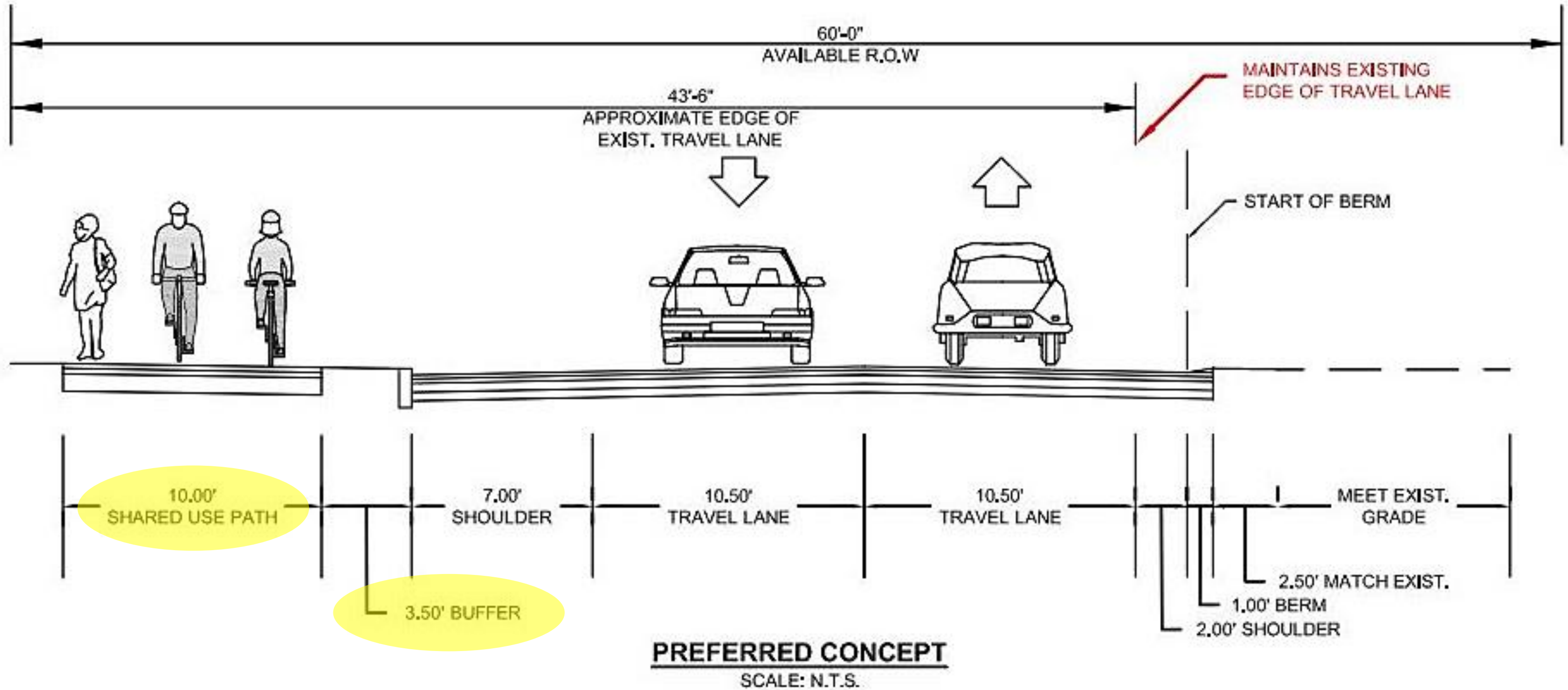
Hybrid Concept– Elevated Two-Way Separated Bike Lanes



Concept Hybrid – Elevated Two-Way Separated Bike Lanes



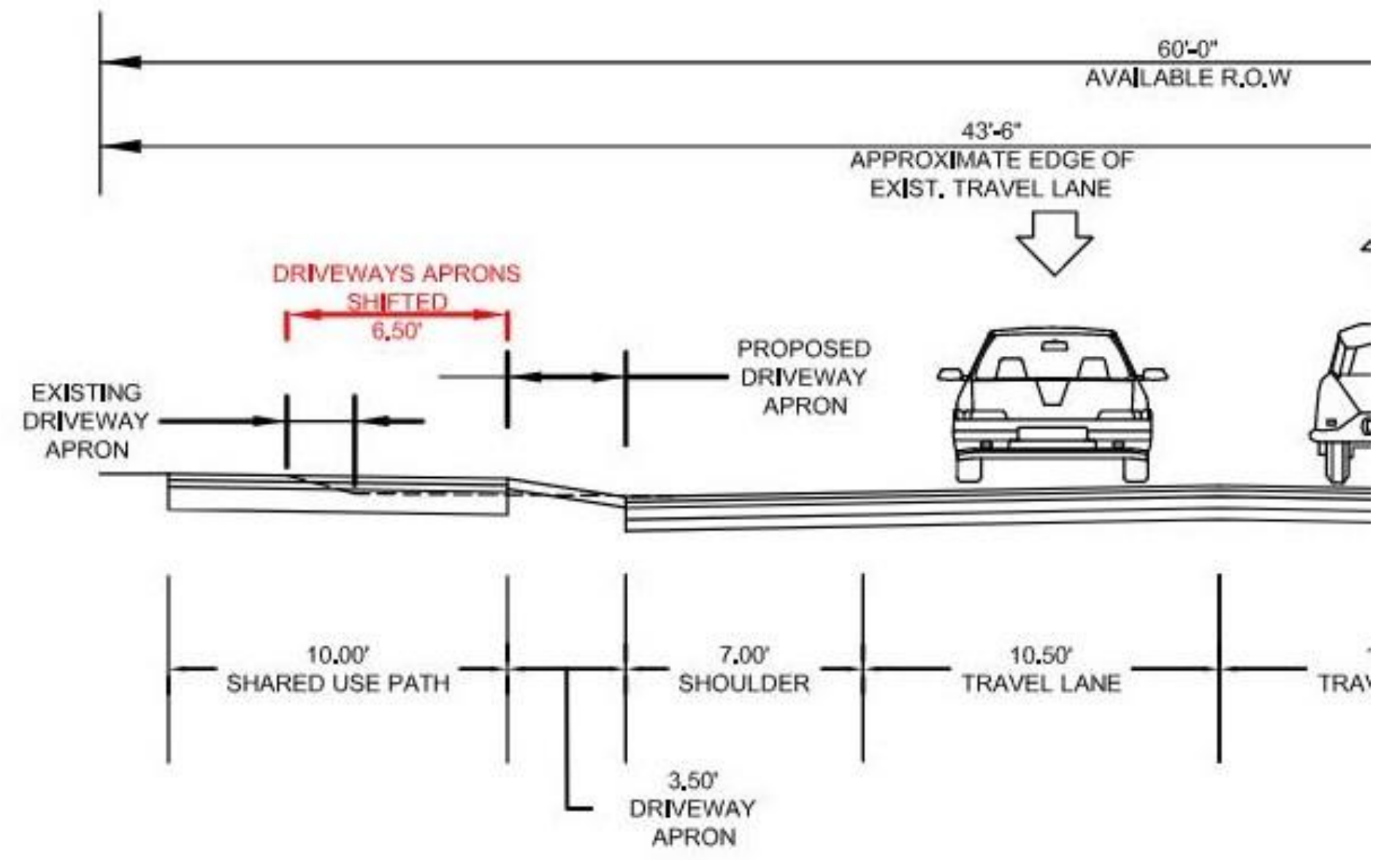
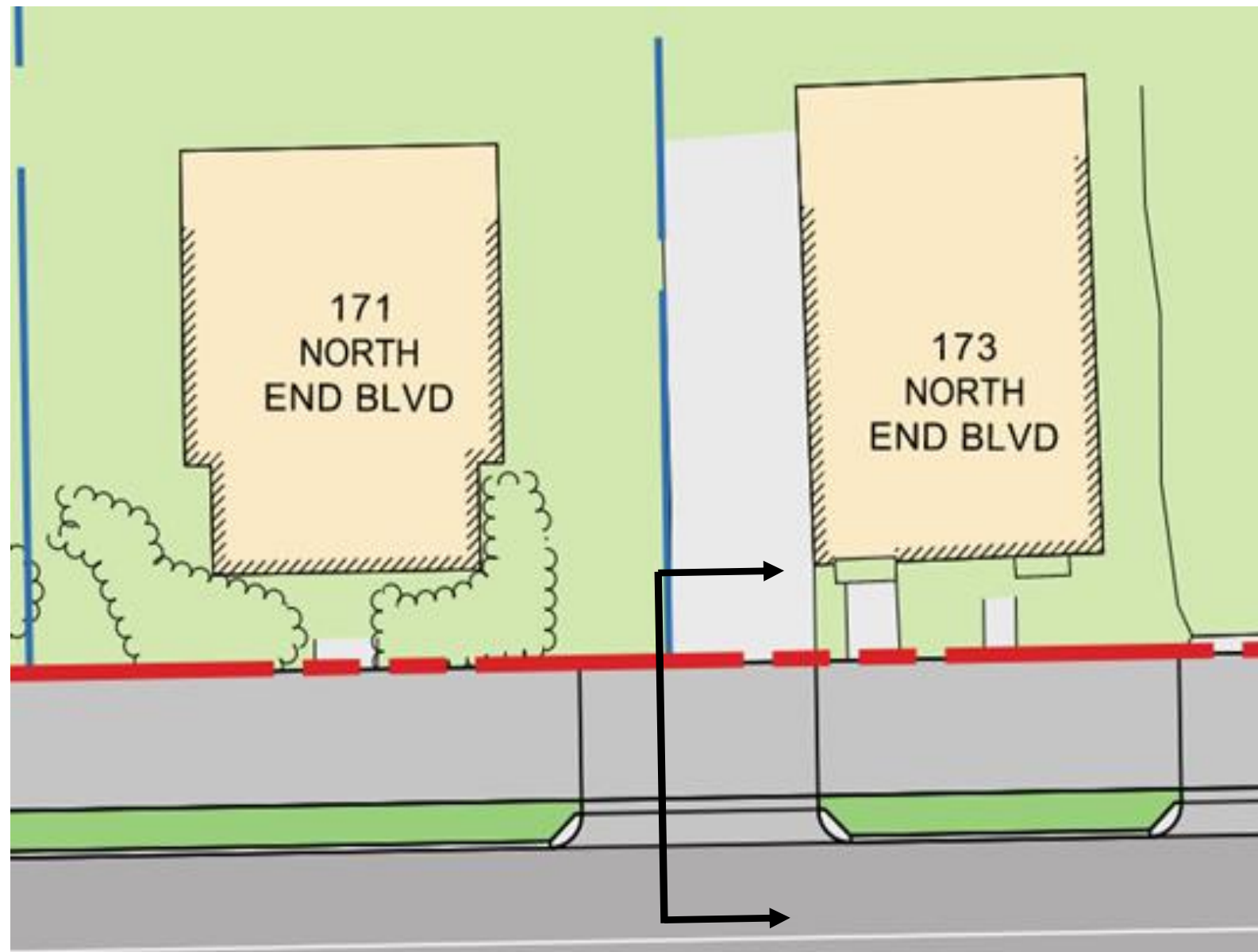
Preferred Concept – Shared Use Path Alternative



Shared Use Path Alternative

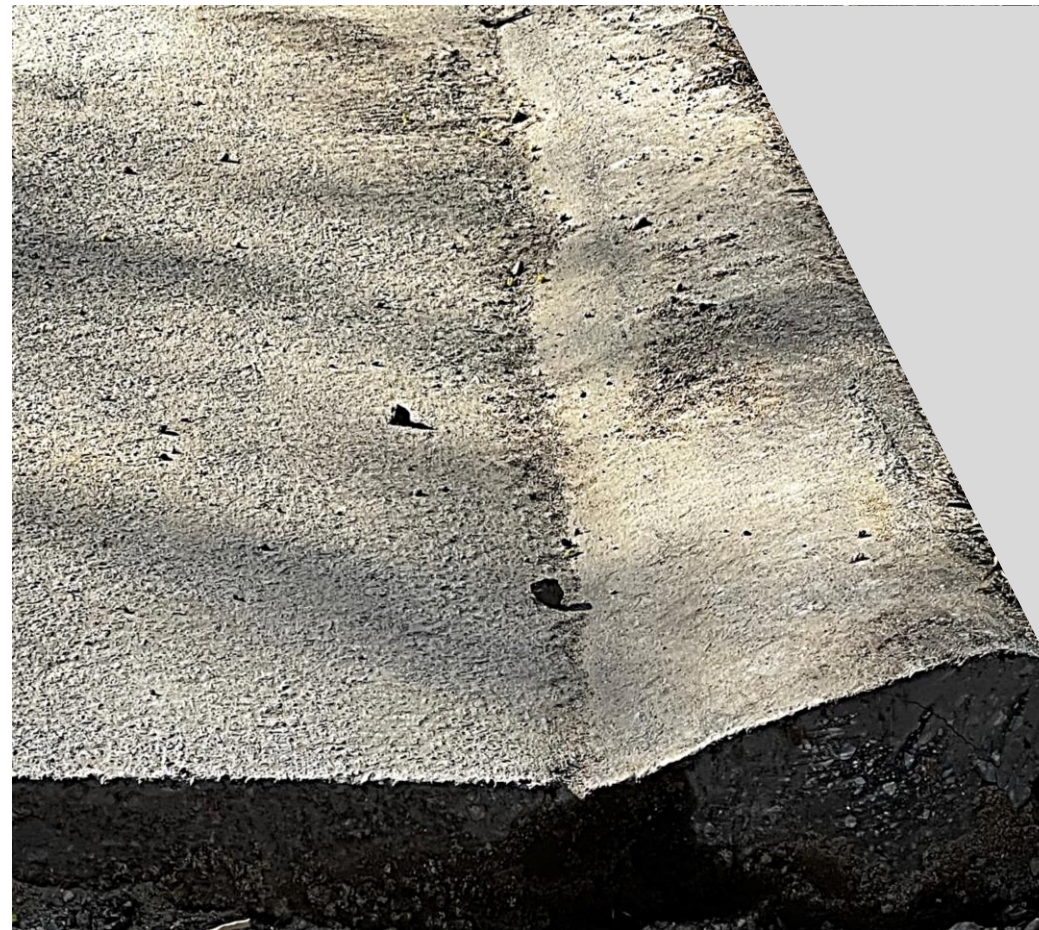
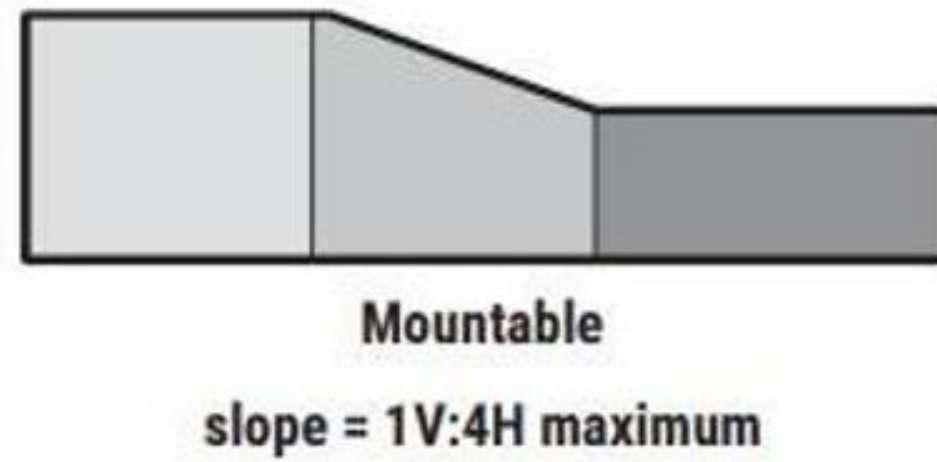
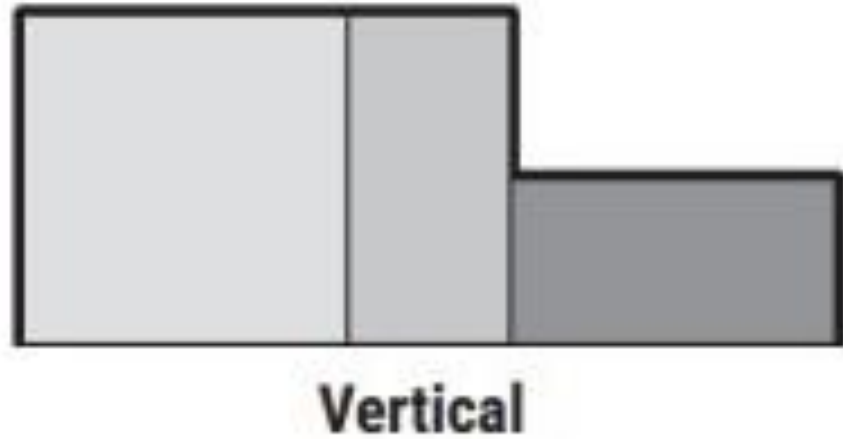


Shared Use Path Alternative – Driveway Aprons on Southbound Side



Safety & Design Improvements

- Shared Bike and Pedestrian Facilities Separated from Roadway
- Pedestrian Bump Outs at Pedestrian and Bike Crossings – shorten vulnerable crossing
- Roadway Edge Treatments – Improve Control of Water





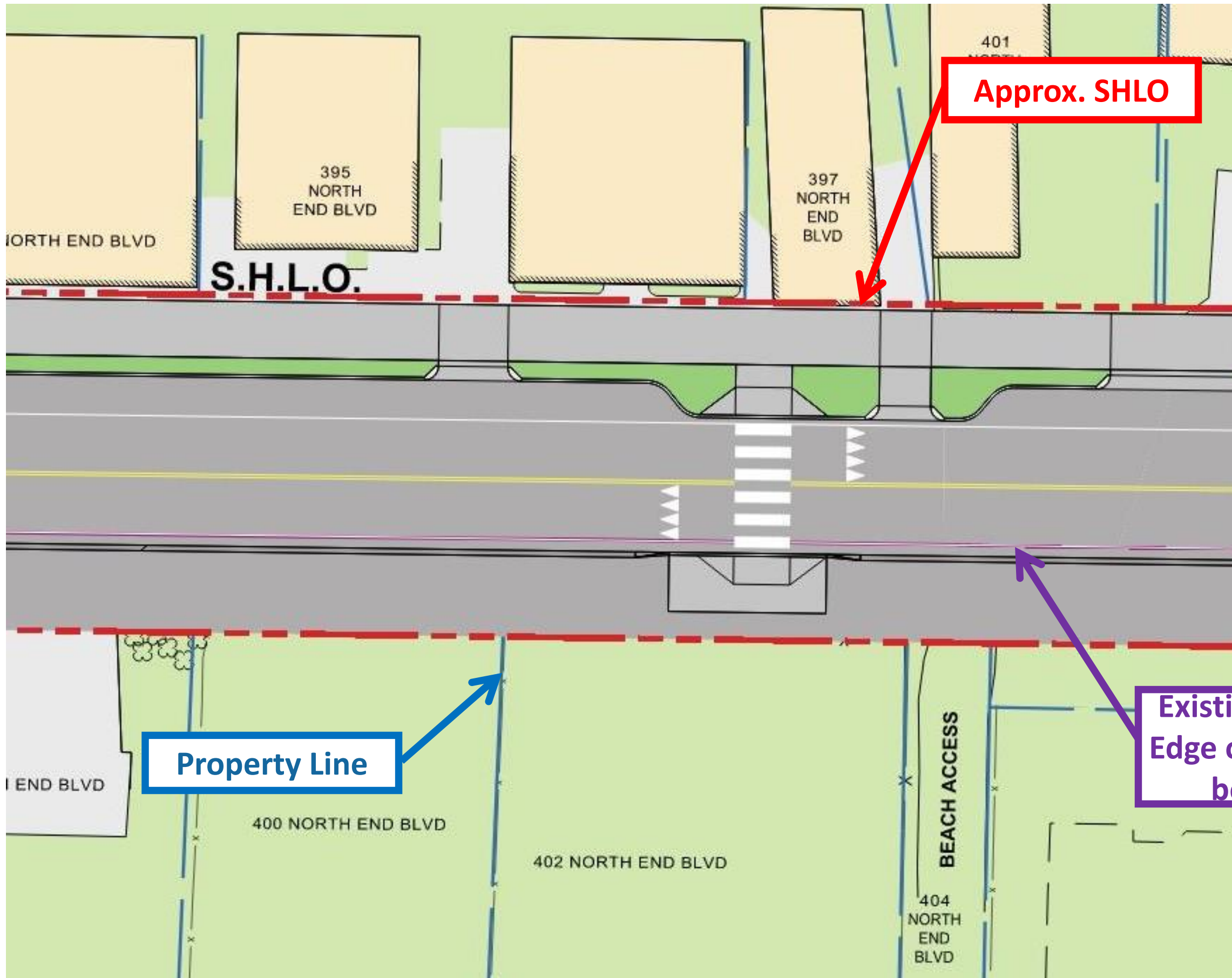
Safety & Design Improvements

- Shared Bike and Pedestrian Facilities Separated from Roadway
- Pedestrian Bump Outs at Pedestrian and Bike Crossings – shorten vulnerable crossing
- Roadway Edge Treatments – Improve Control of Water
- Beach Access Points – Improved Visibility and Enhanced Signage for Safer Crossings



Continued Types of Parking Impacts

- Design enforced parking restrictions at fire hydrants
- Pedestrian crossings and side streets
- Vehicles that encroach into travel way



State Highway Layout (S.H.L.O.)

- S.H.L.O. is all property located between the two **RED** Lines
- Town, Commercial, or Residential properties begin at the S.H.L.O and are shown in **BLUE**.

Our next steps



Project Informational Meeting #5



Development of 25% Design



MassDOT 25% Design Public Hearing



ROW Discussion



How to reach us?

- Submit written comments to:
Carrie Lavallee, P.E. Chief Engineer
MassDOT
10 Park Plaza
Boston, MA 02116
Attention: Project Management, PROJECT FILE NO. 607710
- Submit email comments to:
MassDOTProjectManagement@dot.state.ma.us
Subject Line: PROJECT FILE NO. 607710
- For project information visit the MassDOT Design Public Hearing web site at:
<https://www.mass.gov/massdot-highway-design-public-hearings> or use
the QR Code:

