

## Salisbury 3A Compliance Summary

- Community Category: Adjacent Community
- Model Requirements:
  - Minimum unit capacity: **750 units**
  - Minimum land area: **50 acres**
  - Minimum dwelling units per acre: **15.0 units per acre**

### Overall District

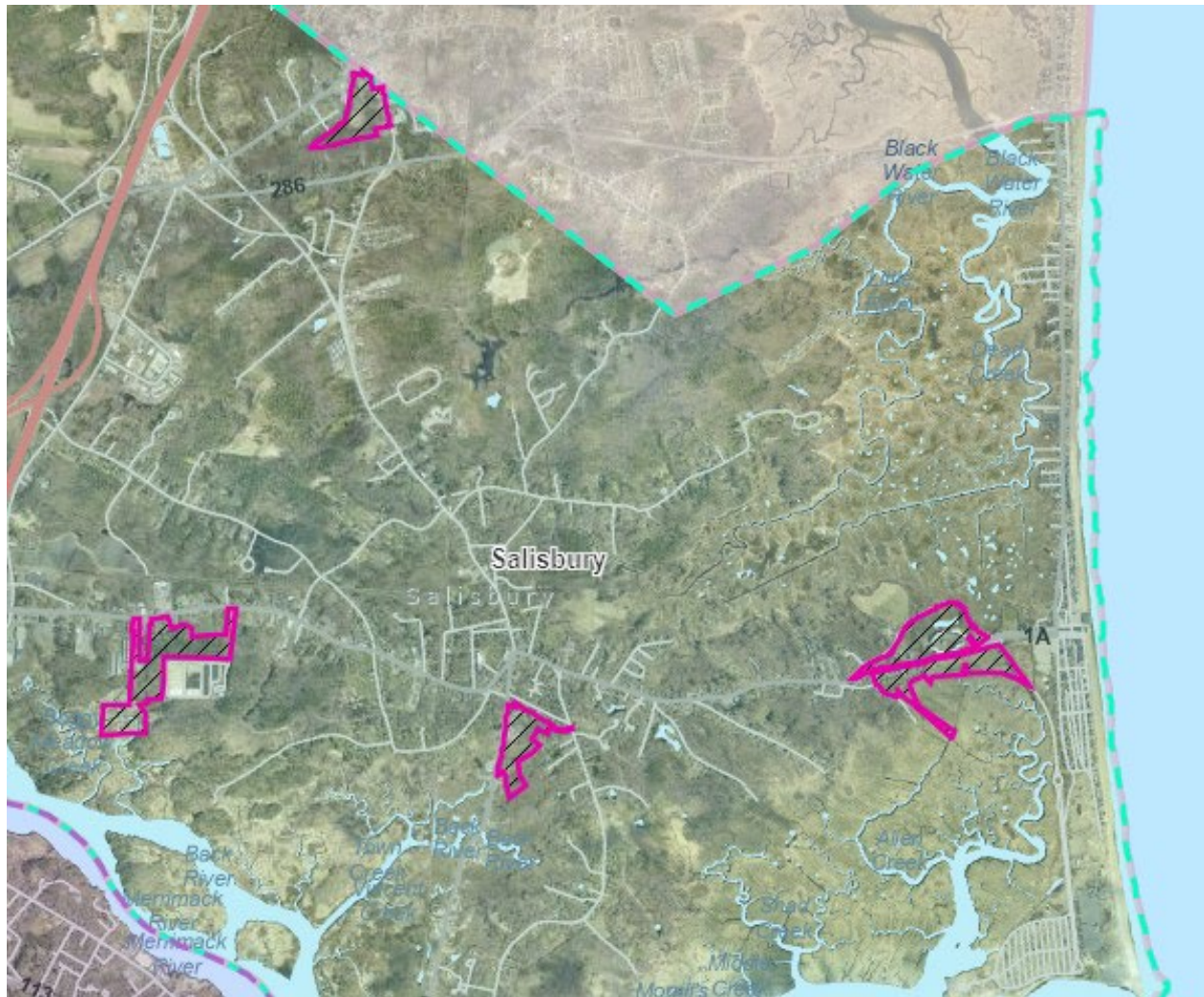
Model Requirements	Entire District	Bridge Road	McKenna Mountain	Elm Street	Beach Commercial
Total Unit Capacity	3,525 units	386 units	746 units	1,246 units	1,147 units
Total Land Area	174.3 acres	23.5 acres	25.1 acres	54.7 acres	70.9 acres
Total Density (Dwelling Units Per Acre)	30.3 units per acre	30.3 units per acre	35.9 units per acre	30.2 units per acre	37.6 units per acre

Note: Density for the entire district is an average of the density of the individual districts.

### Other requirements:

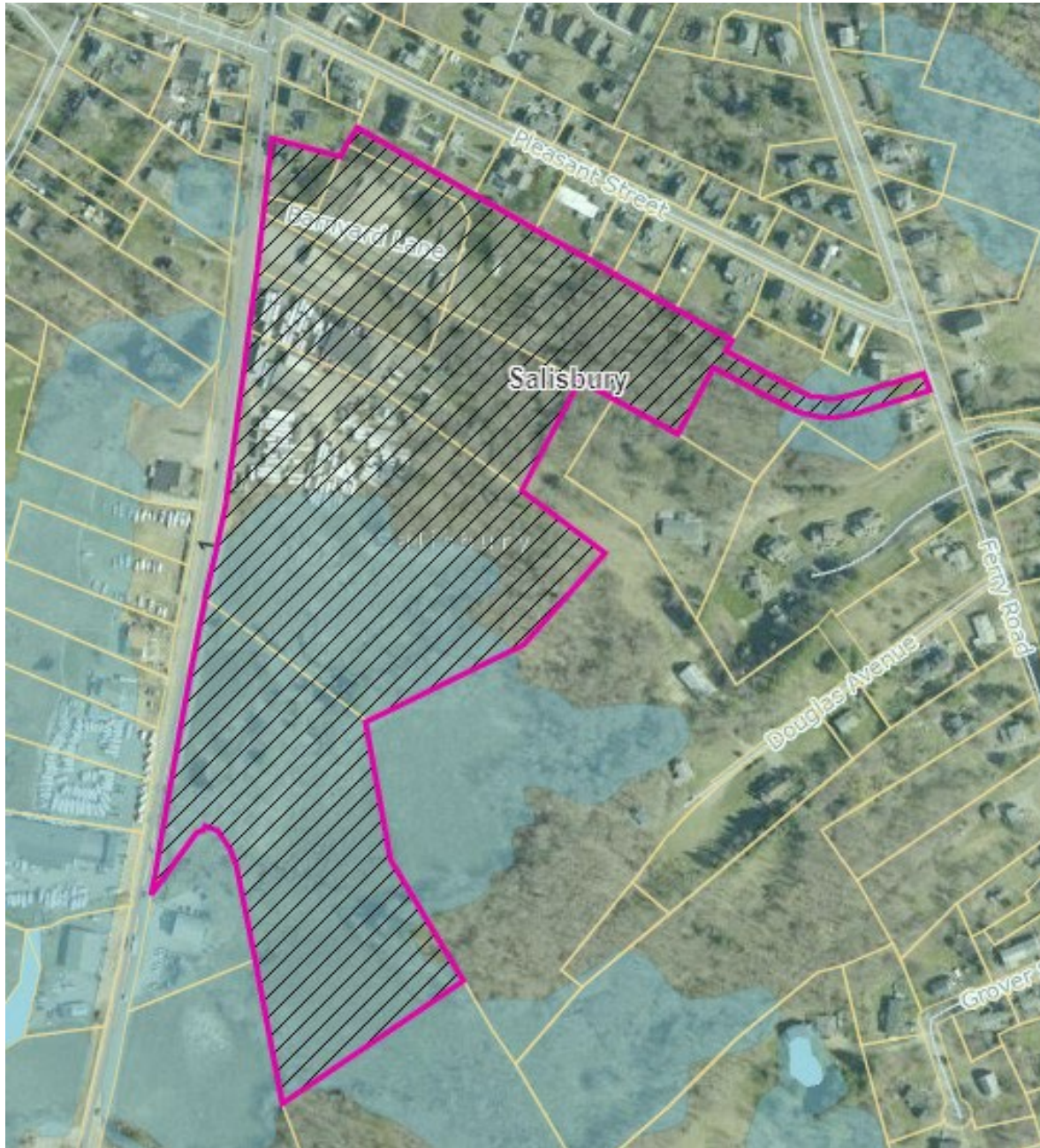
- Building height – Maximum 3 stories (35 feet)
- Parking requirements: 2 parking spaces per dwelling unit

## Total Overlay District



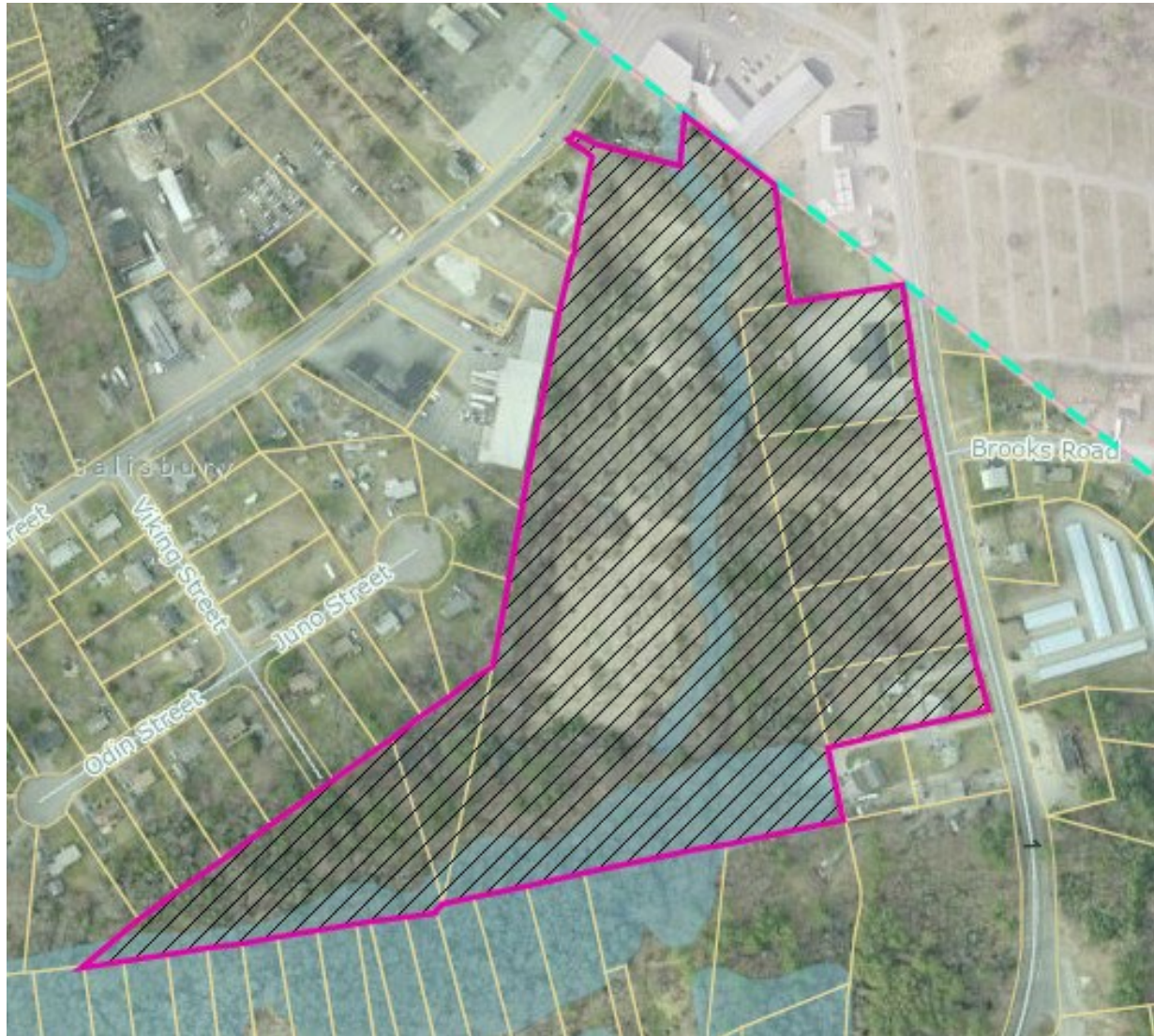


## Bridge Road



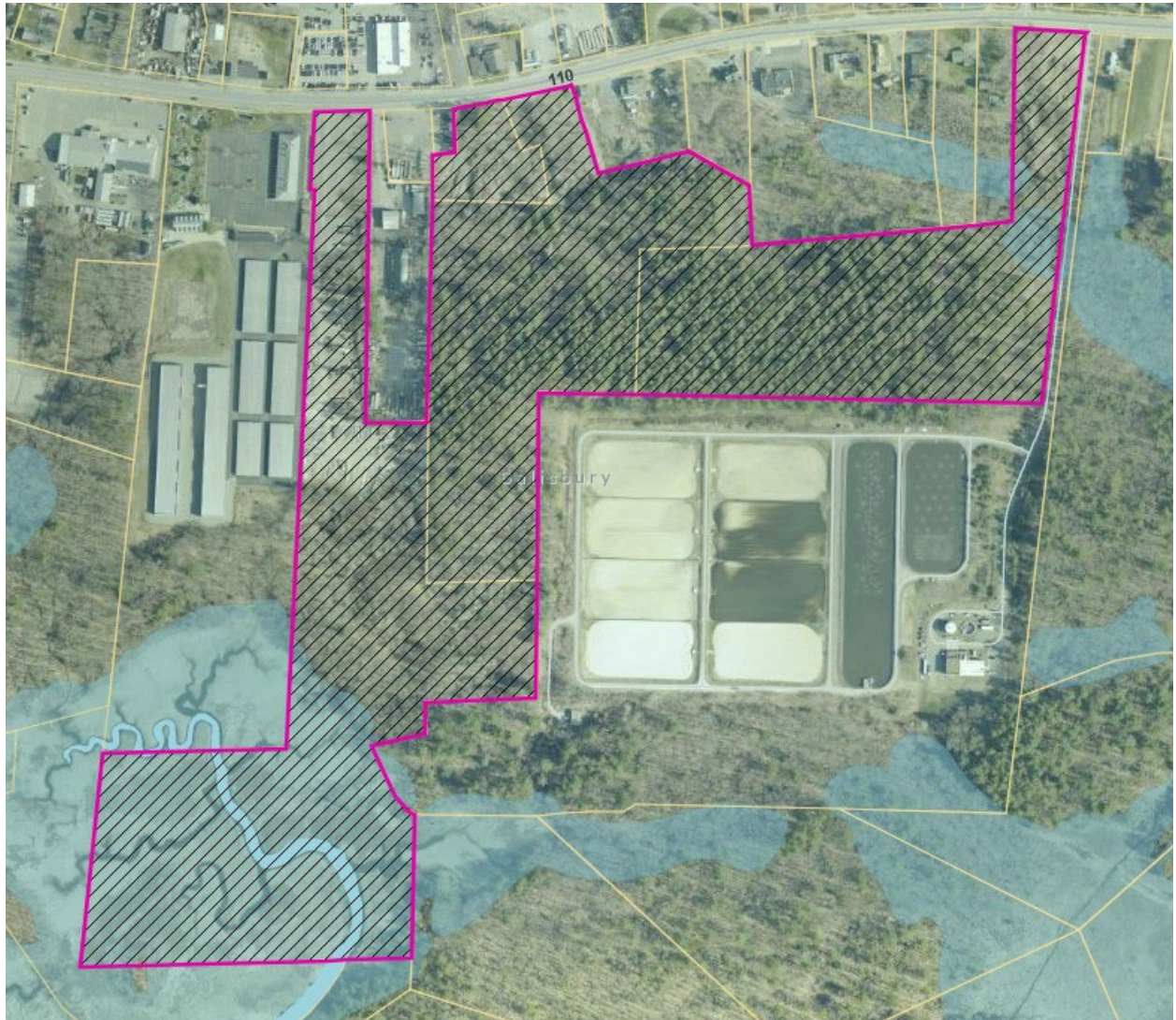


## McKenna Mountain





## Elm Street





## Beach Commercial

