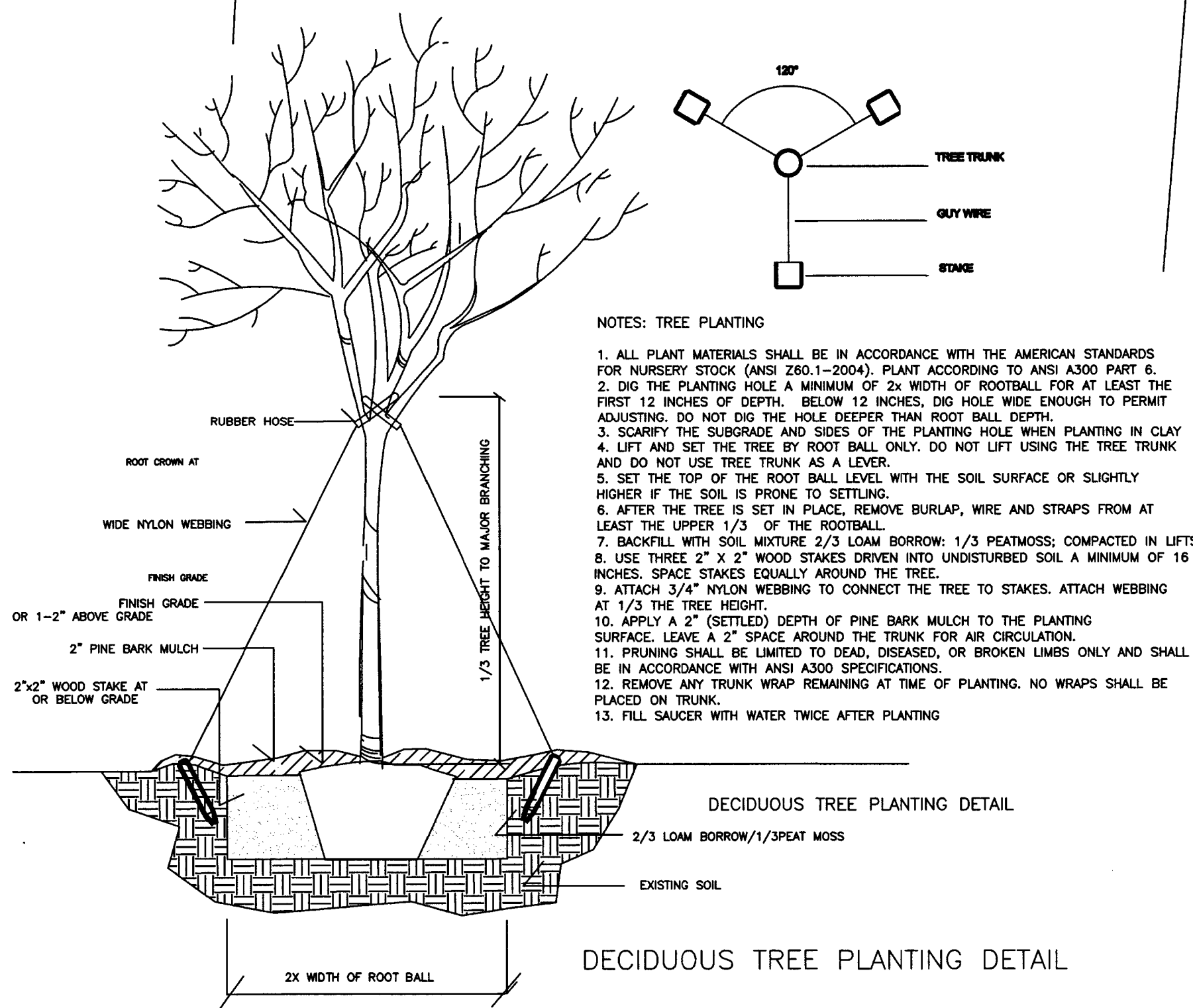
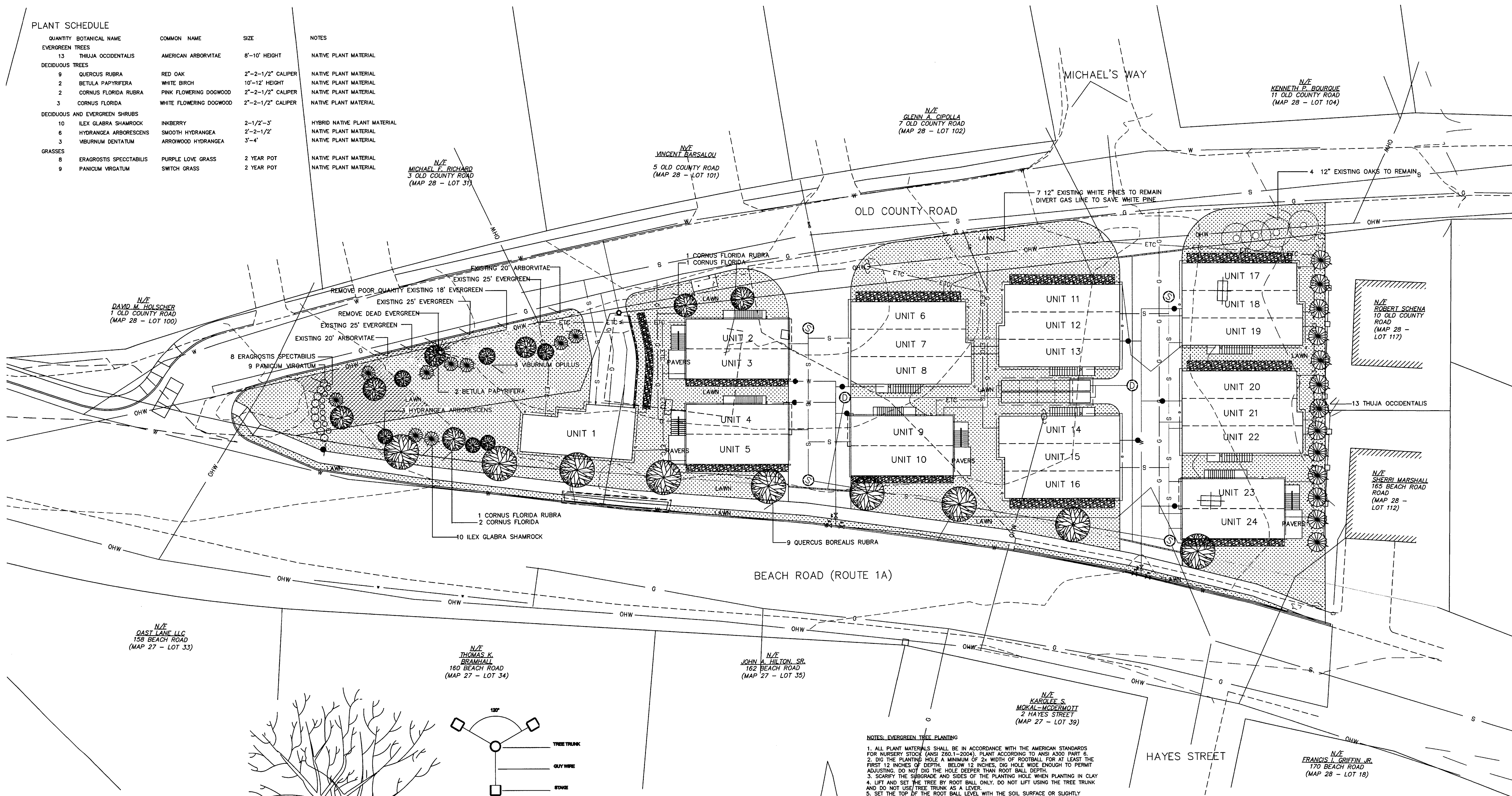


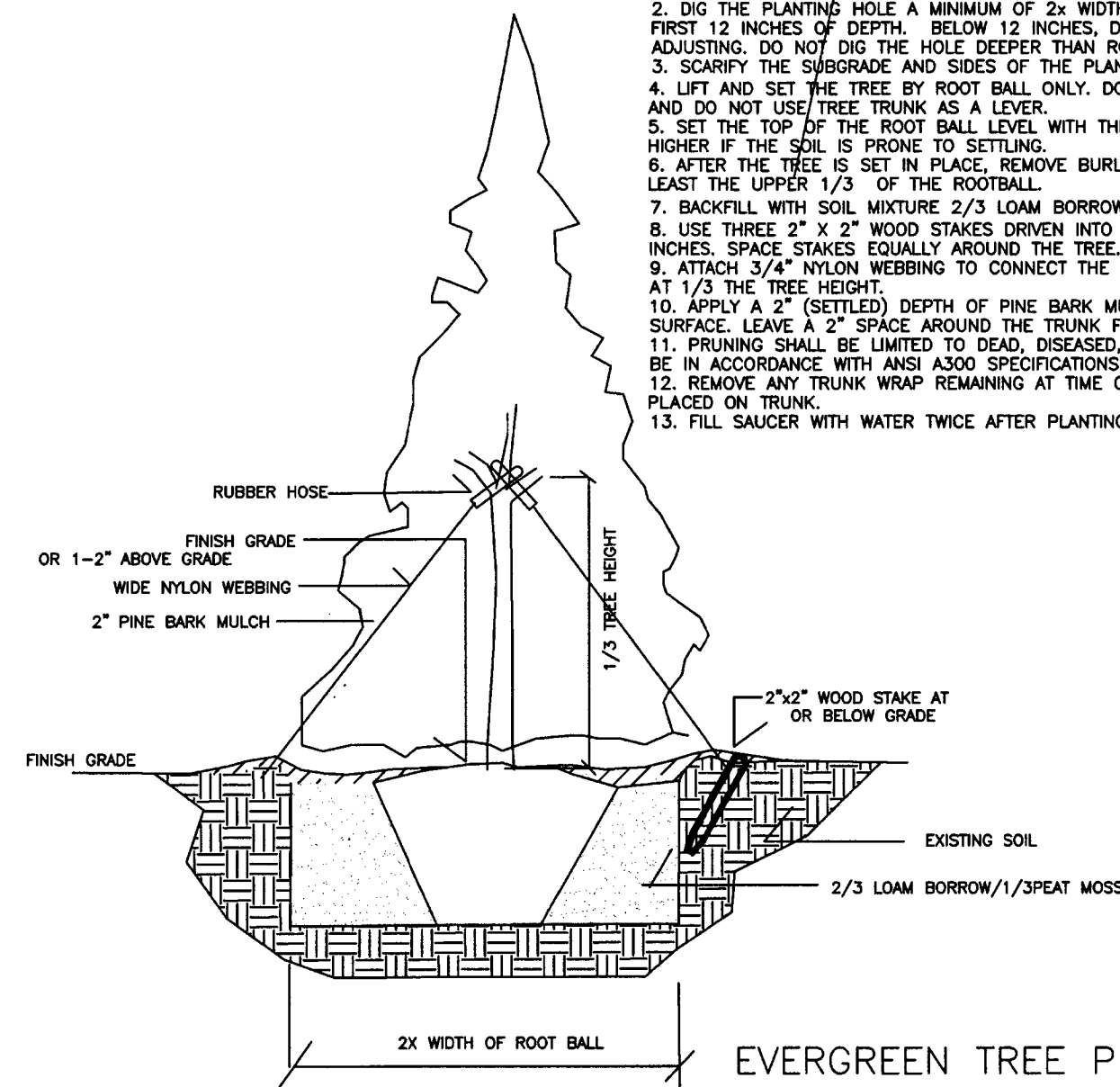
PLANT SCHEDULE

QUANTITY	BOTANICAL NAME	COMMON NAME	SIZE	NOTES
13	THUJA OCCIDENTALIS	AMERICAN ARBORVITAE	8'-10' HEIGHT	NATIVE PLANT MATERIAL
9	QUERCUS RUBRA	RED OAK	2"-2 1/2" CALIPER	NATIVE PLANT MATERIAL
2	BETULA Papyrifera	WHITE BIRCH	10'-12' HEIGHT	NATIVE PLANT MATERIAL
2	CORNUS FLORIDA RUBRA	PINK FLOWERING DOGWOOD	2"-2 1/2" CALIPER	NATIVE PLANT MATERIAL
3	CORNUS FLORIDA	WHITE FLOWERING DOGWOOD	2"-2 1/2" CALIPER	NATIVE PLANT MATERIAL
10	ILEX GLABRA SHAMROCK	INKBERRY	2'-1 1/2'-3'	HYBRID NATIVE PLANT MATERIAL
6	HYDRANGEA ARBORESCENS	SMOOTH HYDRANGEA	2'-2-1/2'	NATIVE PLANT MATERIAL
3	VIBURNUM DENTATUM	ARROWWOOD HYDRANGEA	3'-4'	NATIVE PLANT MATERIAL
8	ERAGROSTIS SPECCTABILIS	PURPLE LOVE GRASS	2 YEAR POT	NATIVE PLANT MATERIAL
9	PANICUM VIRGATUM	SWITCH GRASS	2 YEAR POT	NATIVE PLANT MATERIAL



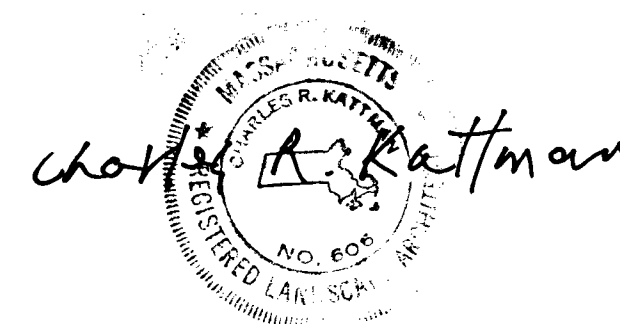
NOTES: TREE PLANTING

1. ALL PLANT MATERIALS SHALL BE IN ACCORDANCE WITH THE AMERICAN STANDARDS FOR NURSERY STOCK (ANSI Z60.1-2004). PLANT ACCORDING TO ANSI A300 PART 6.
2. DIG THE PLANTING HOLE A MINIMUM OF 2x WIDTH OF ROOTBALL FOR AT LEAST THE FIRST 12 INCHES OF DEPTH. BELOW 12 INCHES, DIG HOLE WIDE ENOUGH TO PERMIT ADJUSTING. DO NOT DIG THE HOLE DEEPER THAN ROOT BALL DEPTH.
3. SCARIFY THE SUBGRADE AND SIDES OF THE PLANTING HOLE WHEN PLANTING IN CLAY.
4. LIFT AND SET THE TREE BY ROOT BALL ONLY. DO NOT LIFT USING THE TREE TRUNK AND DO NOT USE TREE TRUNK AS A LEVER.
5. SET THE TOP OF THE ROOT BALL LEVEL WITH THE SOIL SURFACE OR SLIGHTLY HIGHER IF THE SOIL IS PRONE TO SETTLING.
6. AFTER THE TREE IS SET IN PLACE, REMOVE BURLAP, WIRE AND STRAPS FROM AT LEAST THE UPPER 1/3 OF THE ROOTBALL.
7. BACKFILL WITH SOIL MIXTURE 2/3 LOAM BORROW, 1/3 PEATMOSS, COMPACTED IN LIFTS.
8. USE THREE 2\" x 2\" WOOD STAKES DRIVEN INTO UNDISTURBED SOIL A MINIMUM OF 16 INCHES. SPACE STAKES EQUALLY AROUND THE TREE.
9. ATTACH 3/4\" NYLON WEBBING TO CONNECT THE TREE TO STAKES. ATTACH WEBBING AT 1/3 THE TREE HEIGHT.
10. APPLY A 2\" (SETTLED) DEPTH OF PINE BARK MULCH TO THE PLANTING SURFACE. LEAVE A 2\" SPACE AROUND THE TRUNK FOR AIR CIRCULATION.
11. PRUNING SHALL BE LIMITED TO DEAD, DISEASED, OR BROKEN LIMBS ONLY AND SHALL BE IN ACCORDANCE WITH ANSI A300 SPECIFICATIONS.
12. REMOVE ANY TRUNK WRAP REMAINING AT TIME OF PLANTING. NO WRAPS SHALL BE PLACED ON TRUNK.
13. FILL SAUCER WITH WATER TWICE AFTER PLANTING.



NOTES: EVERGREEN TREE PLANTING

1. ALL PLANT MATERIALS SHALL BE IN ACCORDANCE WITH THE AMERICAN STANDARDS FOR NURSERY STOCK (ANSI Z60.1-2004). PLANT ACCORDING TO ANSI A300 PART 6.
2. DIG THE PLANTING HOLE A MINIMUM OF 2x WIDTH OF ROOTBALL FOR AT LEAST THE FIRST 12 INCHES OF DEPTH. BELOW 12 INCHES, DIG HOLE WIDE ENOUGH TO PERMIT ADJUSTING. DO NOT DIG THE HOLE DEEPER THAN ROOT BALL DEPTH.
3. SCARIFY THE SUBGRADE AND SIDES OF THE PLANTING HOLE WHEN PLANTING IN CLAY.
4. LIFT AND SET THE TREE BY ROOT BALL ONLY. DO NOT LIFT USING THE TREE TRUNK AND DO NOT USE TREE TRUNK AS A LEVER.
5. SET THE TOP OF THE ROOT BALL LEVEL WITH THE SOIL SURFACE OR SLIGHTLY HIGHER IF THE SOIL IS PRONE TO SETTLING.
6. AFTER THE TREE IS SET IN PLACE, REMOVE BURLAP, WIRE AND STRAPS FROM AT LEAST THE UPPER 1/3 OF THE ROOTBALL.
7. BACKFILL WITH SOIL MIXTURE 2/3 LOAM BORROW, 1/3 PEATMOSS, COMPACTED IN LIFTS.
8. USE THREE 2\" x 2\" WOOD STAKES DRIVEN INTO UNDISTURBED SOIL A MINIMUM OF 16 INCHES. SPACE STAKES EQUALLY AROUND THE TREE.
9. ATTACH 3/4\" NYLON WEBBING TO CONNECT THE TREE TO STAKES. ATTACH WEBBING AT 1/3 THE TREE HEIGHT.
10. APPLY A 2\" (SETTLED) DEPTH OF PINE BARK MULCH TO THE PLANTING SURFACE. LEAVE A 2\" SPACE AROUND THE TRUNK FOR AIR CIRCULATION.
11. PRUNING SHALL BE LIMITED TO DEAD, DISEASED, OR BROKEN LIMBS ONLY AND SHALL BE IN ACCORDANCE WITH ANSI A300 SPECIFICATIONS.
12. REMOVE ANY TRUNK WRAP REMAINING AT TIME OF PLANTING. NO WRAPS SHALL BE PLACED ON TRUNK.
13. FILL SAUCER WITH WATER TWICE AFTER PLANTING.



Project

159
BEACH
ROAD
SALISBURY
MA 01952

LARKIN
LARKIN AND LARKIN
DEVELOPMENT CORP.

709
LOWELL
STREET
METHUEN
MA 01844

KATTMAN
CORPORATION
Landscape Architects
Landscape Architecture
Planning

RICHARD KATTMAN
Mass. License # 606
24 WATER STREET
HOLLISTON, MASS. 01746
508-893-6232
richard.kattman@gmail.com
www.richardkattman.com

Sheet Title
LANDSCAPE
PLAN

Scale: 1"=20'-0"
Date: 03/21/2023
Revisions:

Sheet Number
L1