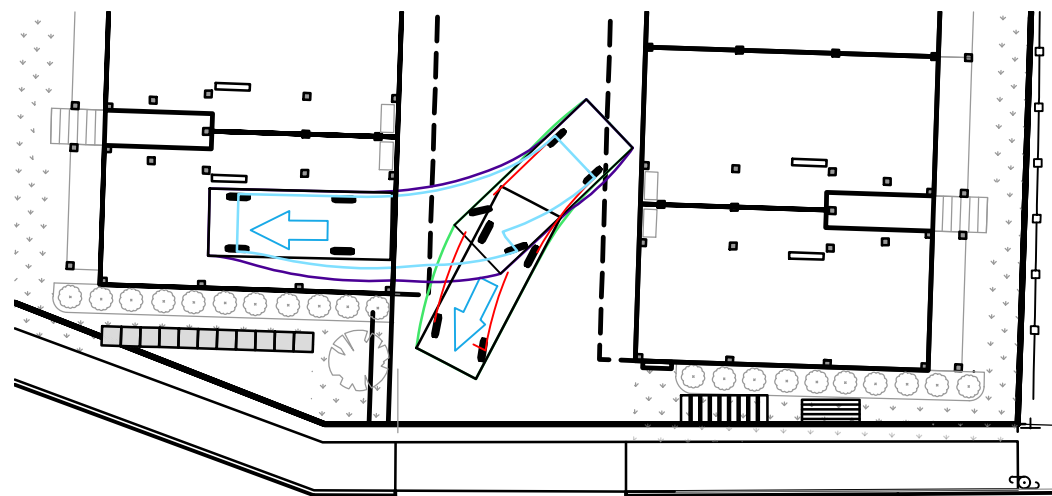


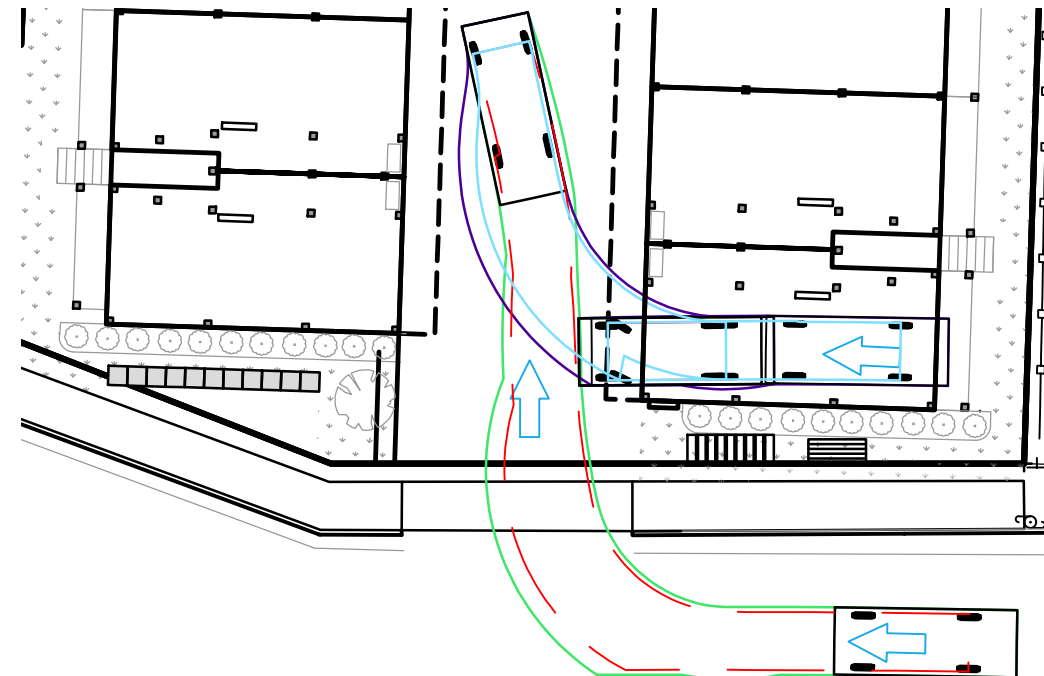
PASSENGER CAR BACKING UP FROM REAR UNIT
(SCALE: 1"=20')



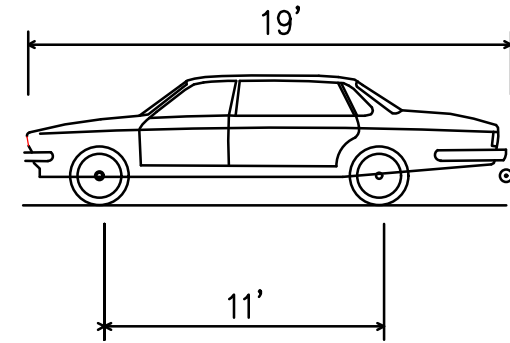
PASSENGER CAR BACKING UP FROM REAR UNIT
(SCALE: 1"=20')



PASSENGER CAR BACKING UP FROM FRONT UNIT
(SCALE: 1"=20')



PASSENGER CAR PARKING AT FRONT UNIT
(SCALE: 1"=20')



AASHTO PASSENGER CAR
(NOT TO SCALE)

LENGTH	19.00 FT
WIDTH	7.00 FT
HEIGHT	4.30 FT
TRACK WIDTH	6.00 FT
LOCK-TO-LOCK TIME	4 SEC
CURB TO CURB TURNING RADIUS	31.60 FT

LEGEND:

- PATH DIRECTION
- CAR OVERHANG PATH
- CAR OUTSIDE WHEEL PATH
- CAR OVERHANG PATH (REVERSE)
- CAR OUTSIDE WHEEL PATH (REVERSE)

DESIGN SPEED: 5 MPH