

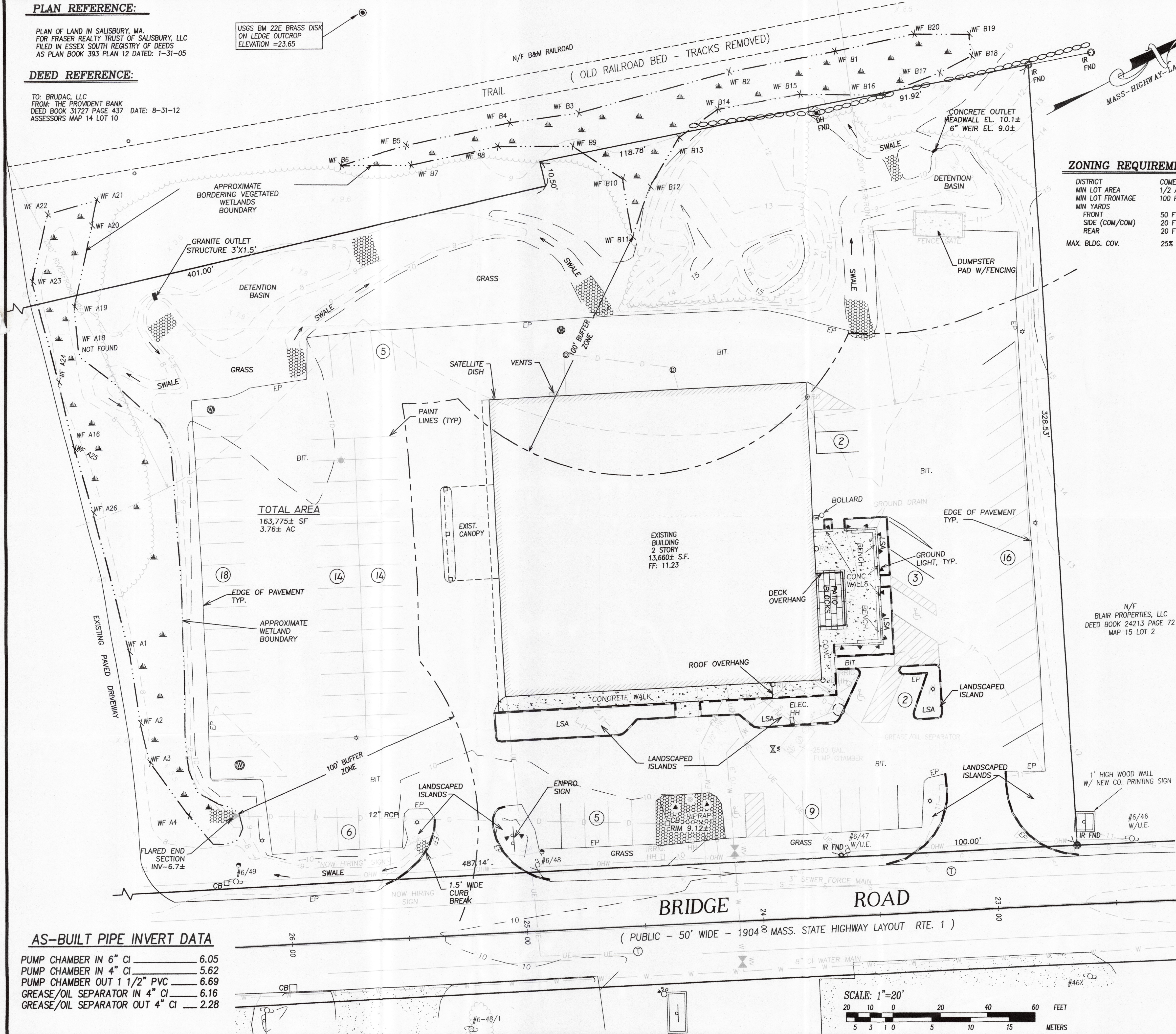
PLAN REFERENCE:

PLAN OF LAND IN SALISBURY, MA.
FOR FRASER REALTY TRUST OF SALISBURY, LLC
FILED IN ESSEX SOUTH REGISTRY OF DEEDS
AS PLAN BOOK 393 PLAN 12 DATED: 1-31-05

USGS BM 22E BRASS DISK
ON LEDGE OUTCROP
ELEVATION =23.65

DEED REFERENCE:

TO: BRUDAC, LLC
FROM: THE PROVIDENT BANK
DEED BOOK 31727 PAGE 437 DATE: 8-31-12
ASSESSORS MAP 14 LOT 10



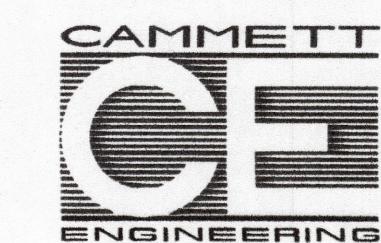
LEGEND:

- EXISTING CONTOURS
- SPOT GRADE
- WETLAND BOUNDARY
- WETLAND FLAG
- SIGN
- FLAG POLE
- LIGHT POLE
- GROUND LIGHT
- FLARED END SECTION
- GUY WIRE
- UTILITY POLE
- CATCH BASIN
- DRAIN MANHOLE
- SEWER MANHOLE
- TELEPHONE MANHOLE
- FIRE HYDRANT
- WATER VALVE
- GAS VALVE
- DRAINAGE LINE
- UNDERGROUND ELECTRIC, TELEPHONE, CABLE.
- SEWER LINE
- WATER LINE
- GAS LINE
- OVERHEAD WIRE
- WOOD FENCE
- TREE LINE
- STONE WALL
- RIP-RAP
- GRANITE CURBING
- EDGE OF PAVEMENT
- BUILDING
- CONCRETE SURFACE
- BITUMINOUS SURFACE
- DRILL HOLE
- IRON PIPE
- MASSACHUSETTS HIGHWAY BOUND
- MAIL BOX
- WATER SHUT-OFF
- ROOF DRAIN
- HANDICAPPED PARKING SPACE
- NUMBER OF PARKING SPACES IN ROW
- GAS METER
- HAND HOLE
- ELECTRIC HAND HOLE
- IRRIG. HAND HOLE
- MONITORING WELL

ZONING REQUIREMENTS:

DISTRICT	COMMERCIAL
MIN LOT AREA	1/2 ACRE
MIN LOT FRONTAGE	100 FT.
MIN YARDS	
FRONT	50 FT.
SIDE (COM/COM)	20 FT.
REAR	20 FT.
MAX. BLDG. COV.	25%

FOR REGISTRY USE ONLY



297 ELM STREET, AMESBURY, MA.
Phone: (978) 388-2157 Fax: (978) 388-0428
CONSULTING ENGINEERS &
LAND SURVEYORS SINCE 1975
Visit us on the WEB at www.cammett.com

Sheet Title:

SITE PLAN AS-BUILT

Project Title:

BRUDAC SITE PLAN AS-BUILT

114 Bridge Road
Salisbury, Ma. 01952

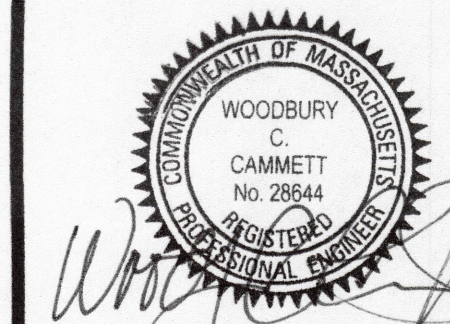
MAP 14 PARCEL 10

Owner:

BRUDAC, LLC.
c/o ENPRO SERVICES, INC.
114 BRIDGE ROAD
SALISBURY, MA 01952

REVISION

NO.	DATE	DESCRIPTION	BY



Date: 4-4-2016

PROJ. MGR.: R. SMITH

FIELD: M. MICHAUD

DESIGN: J. SALVAGGIO

CHECKED: W. CAMMETT

DATE: 5/3/16

FILE: K:\116020 SITE ASBLT.dwg

FBK:

JOB #: 16020

SHEET 1 of 1

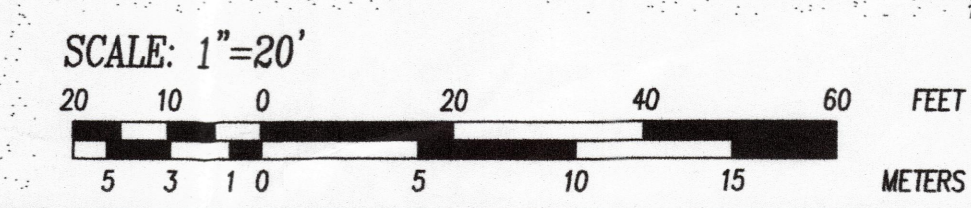
THIS PLAN IS A RESULT OF AS BUILT SURVEYS DONE IN THE FIELD FROM AUGUST 1, 2013 TO APRIL 14, 2016. IT SHOWS SUBSTANTIAL COMPLETION OF WORK PROPOSED ON THE SITE PLAN, FOR WHICH A PERMIT WAS ISSUED BY THE PLANNING BOARD.

NOTES:

- 1.) VERTICAL DATUM IS NGVD 1929.
- 2.) THE LOCUS PROPERTY IS SHOWN AS LOT 10 ON ASSESSOR'S MAP 14.
- 3.) THE LOCATIONS OF EXISTING UTILITIES ARE SHOWN IN AN APPROXIMATE WAY ONLY AND HAVE NOT BEEN INDEPENDENTLY VERIFIED BY THE OWNER OR ITS REPRESENTATIVE. THE CONTRACTOR SHALL DETERMINE THE EXACT LOCATION OF ALL EXISTING UTILITIES BEFORE COMMENCING WORK, AND AGREES TO BE FULLY RESPONSIBLE FOR ANY AND ALL DAMAGES WHICH MIGHT BE OCCASIONED BY THE CONTRACTOR'S FAILURE TO EXACTLY LOCATE AND PRESERVE ANY AND ALL UTILITIES.



TOLL FREE
1-888-DIG-SAFE
(1-888-344-7233)



AS-BUILT PIPE INVERT DATA

PUMP CHAMBER IN 6" CI	6.05
PUMP CHAMBER IN 4" CI	5.62
PUMP CHAMBER OUT 1 1/2" PVC	6.69
GREASE/OIL SEPARATOR IN 4" CI	6.16
GREASE/OIL SEPARATOR OUT 4" CI	2.28